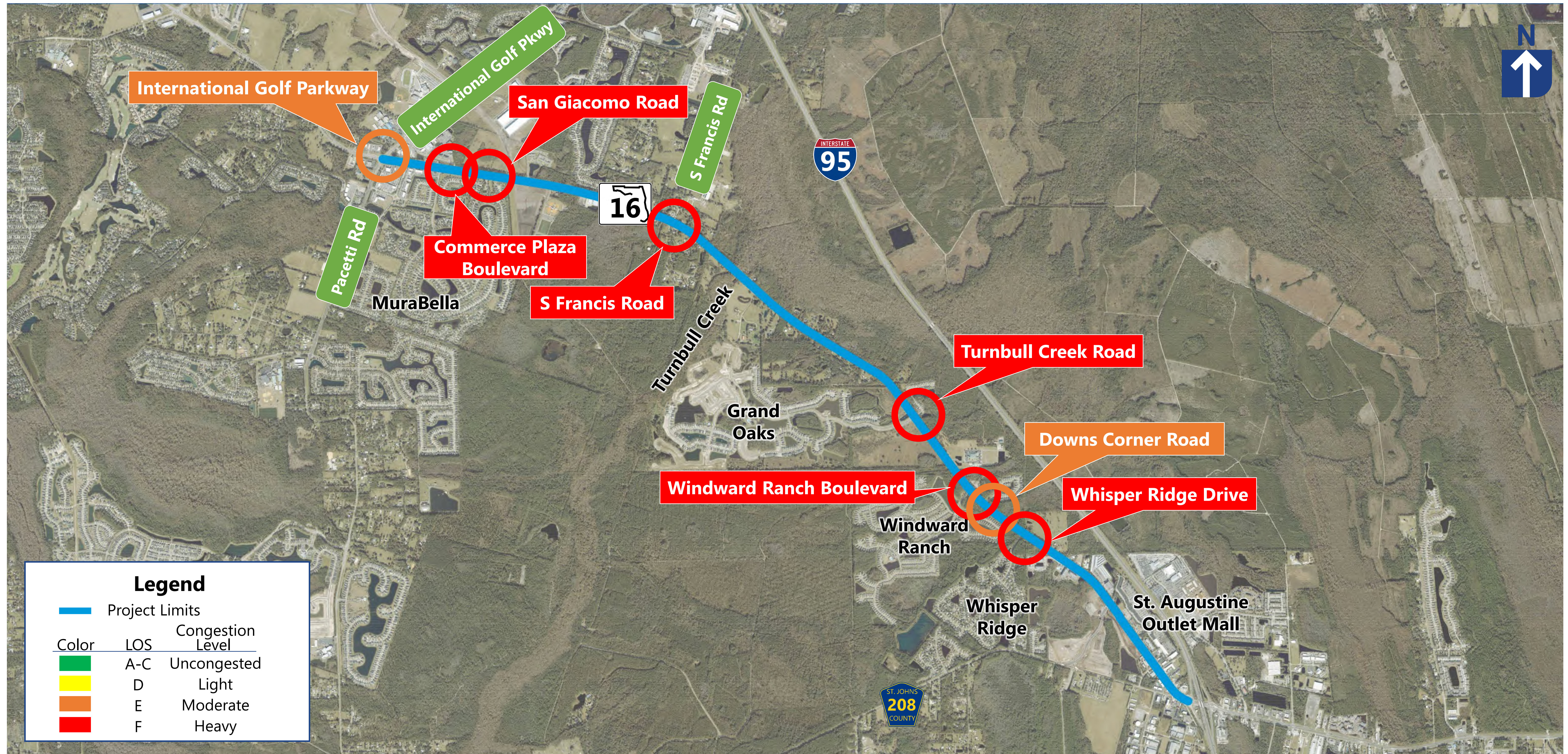
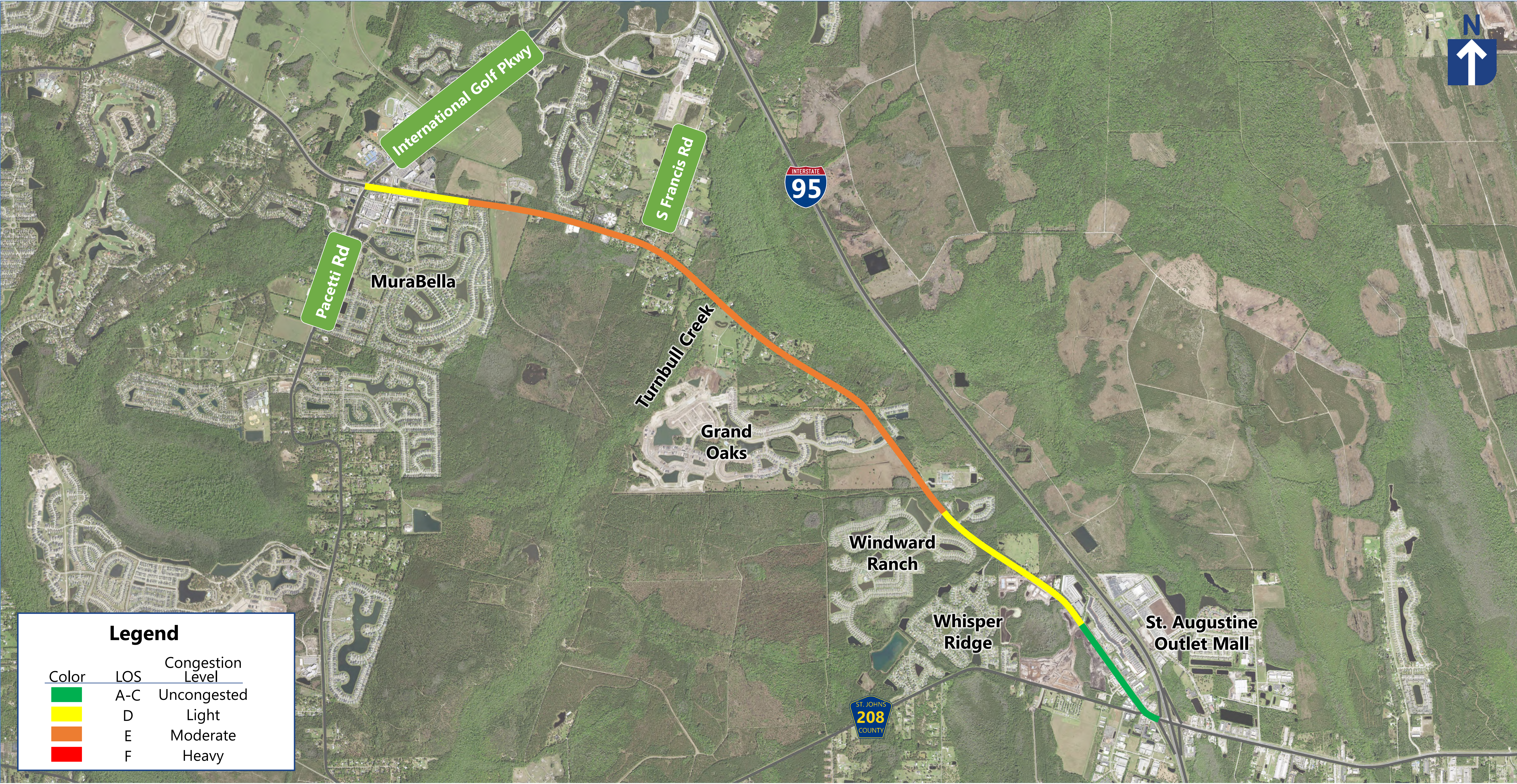


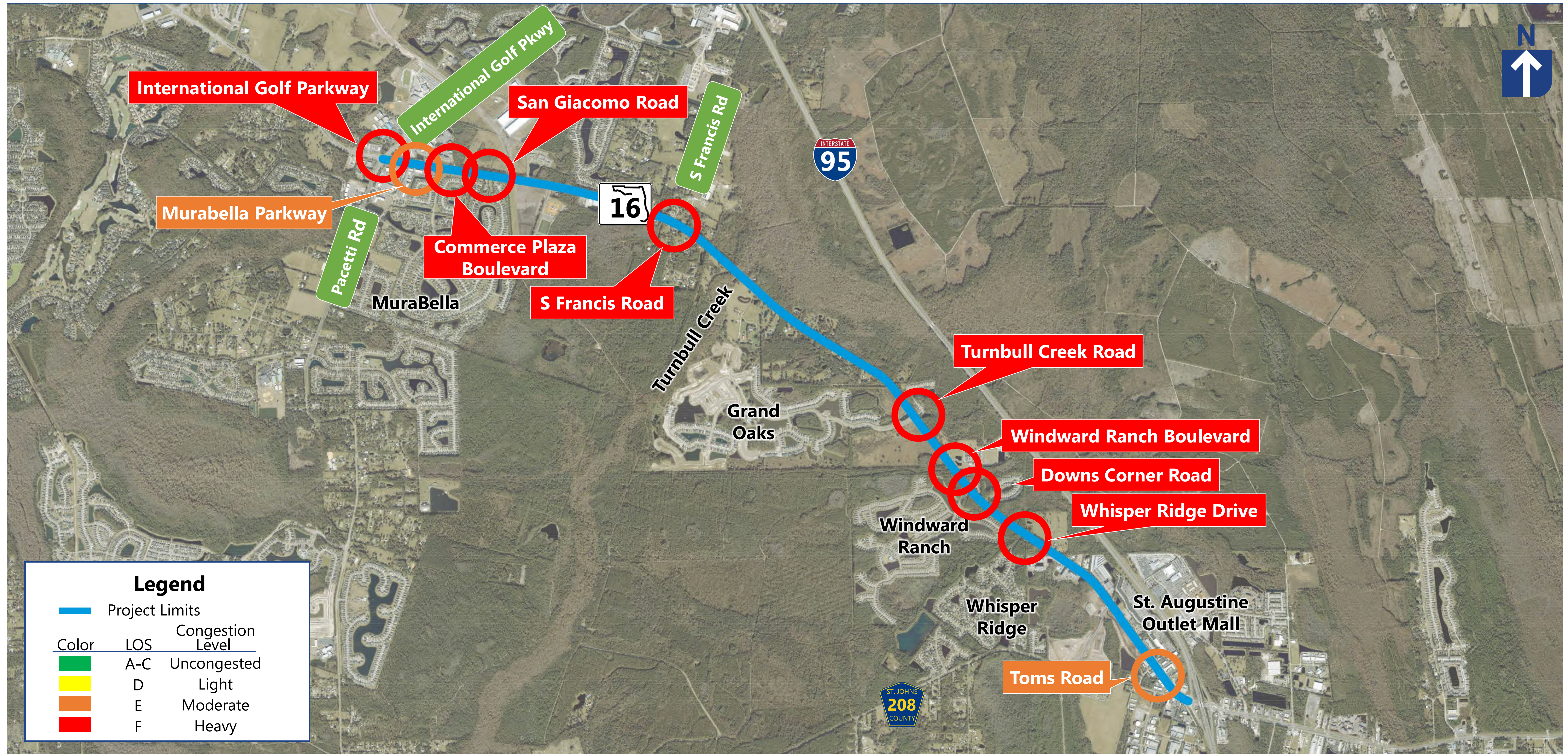
Existing Traffic Analysis – Intersections Operating at Level of Service E or Lower:



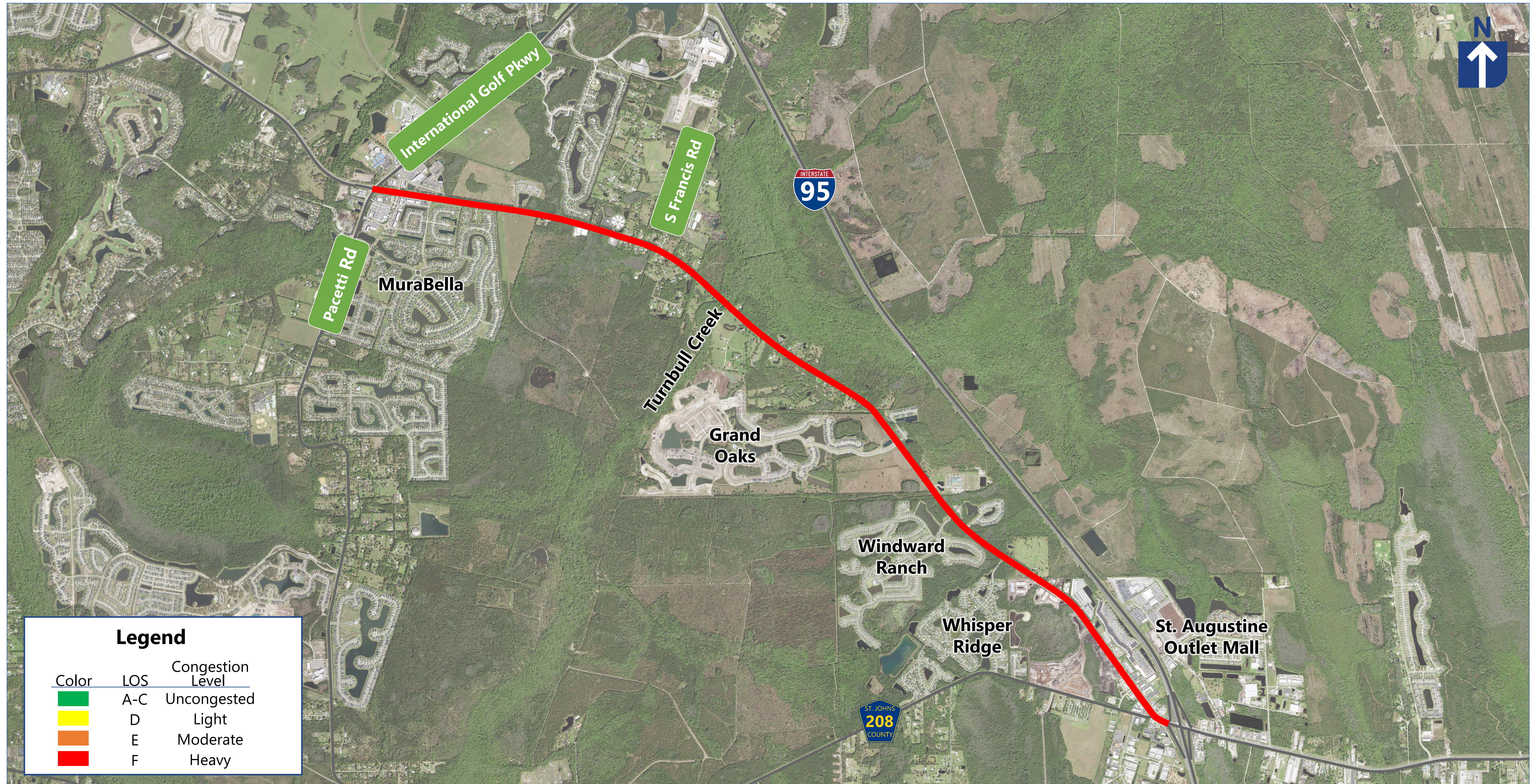
Existing Traffic Analysis - Segments



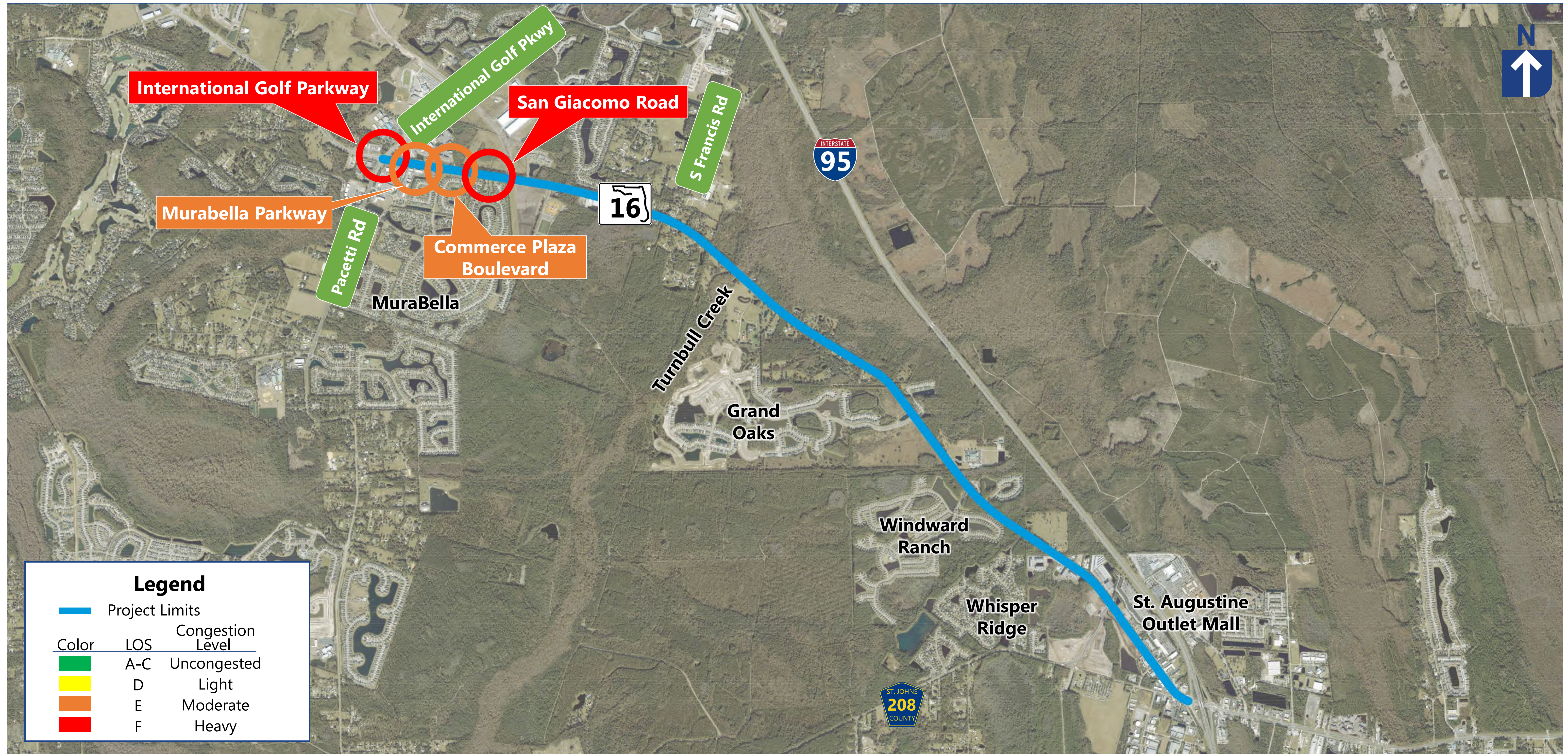
2050 No-Build Traffic Analysis – Intersections Operating at Level of Service E or Lower:



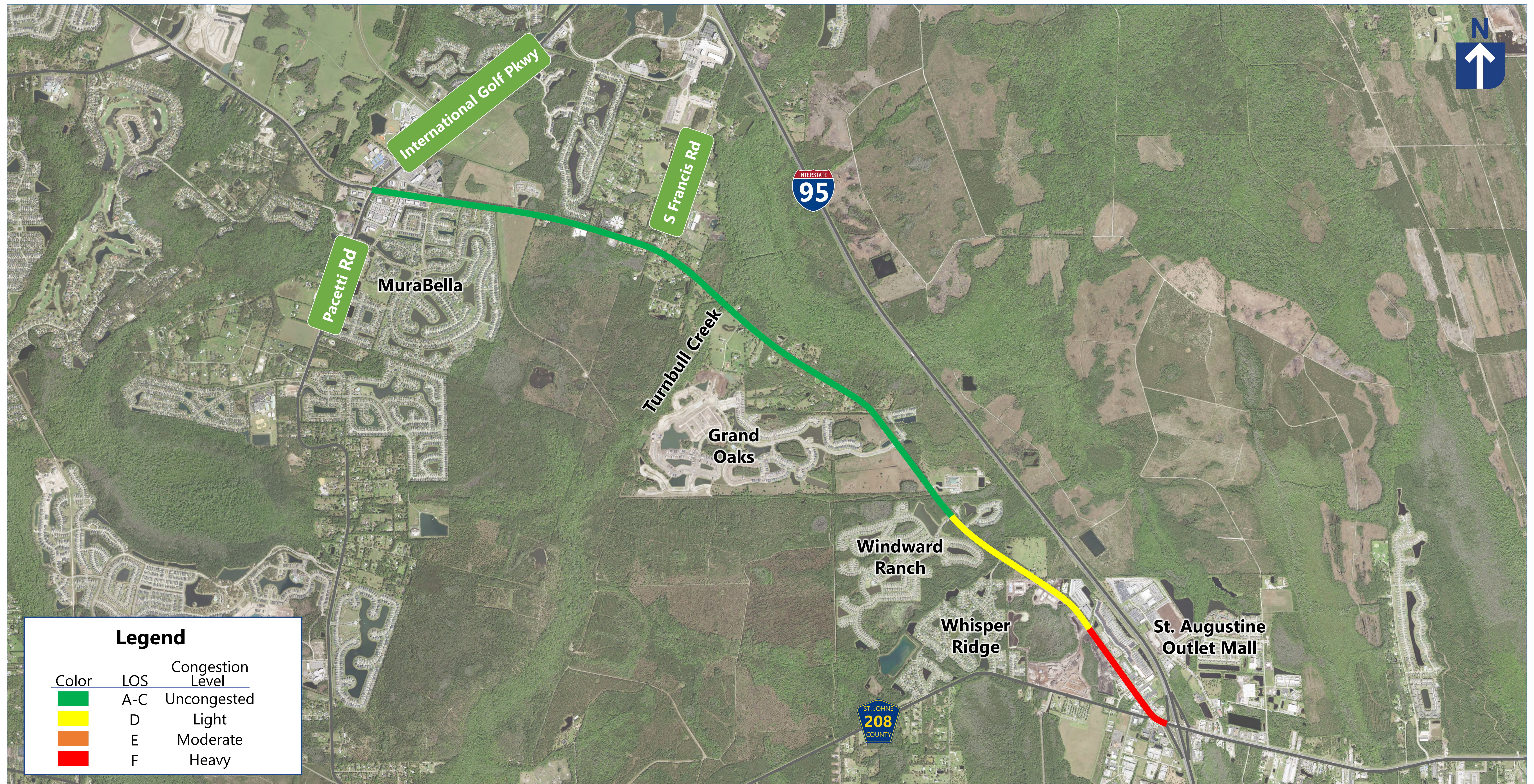
2050 No-Build Traffic Analysis - Segments



Preferred Alternative 2050 Traffic Analysis – Intersections Operating at Level of Service E or Lower:



Preferred Alternative 2050 Traffic Analysis - Segments



Proposed Signal Locations

Additional Signals May Be Warranted In The Design Year



Partial Median U-Turn Intersections

Project Example: SR 16 at County Road 2209

What is a Partial Median U-Turn?

A Partial Median U-turn is an intersection design that redirects left-turning vehicles to make a U-turn at a designated median opening beyond the main intersection, improving safety and traffic flow by reducing conflict points.

Benefits of a Partial Median U-Turn

- Improved safety
- Increased efficiency
- Shorter wait times
- Cost effective



Motorists on SR 16 eastbound wishing to access CR 2209 will need travel further east, past the intersection, and then perform a U-turn, head west on SR 16 and turn right onto CR 2209.

Thru-Cut Intersections

Project Example: SR 16 at Turnbull Creek Road

What is a Thru-Cut?

A thru-cut intersection enhances traffic safety by prohibiting through movements for side street traffic, allowing motorists to turn left or right at the intersection. Side street motorists can then make a U-turn at a median opening to cross SR 16. Left and right turn lanes on side streets may be channelized with physical barriers or pavement markings, while the main intersection is typically controlled by traffic signals, promoting a more organized and efficient flow of traffic.

Benefits of a Thru-Cut

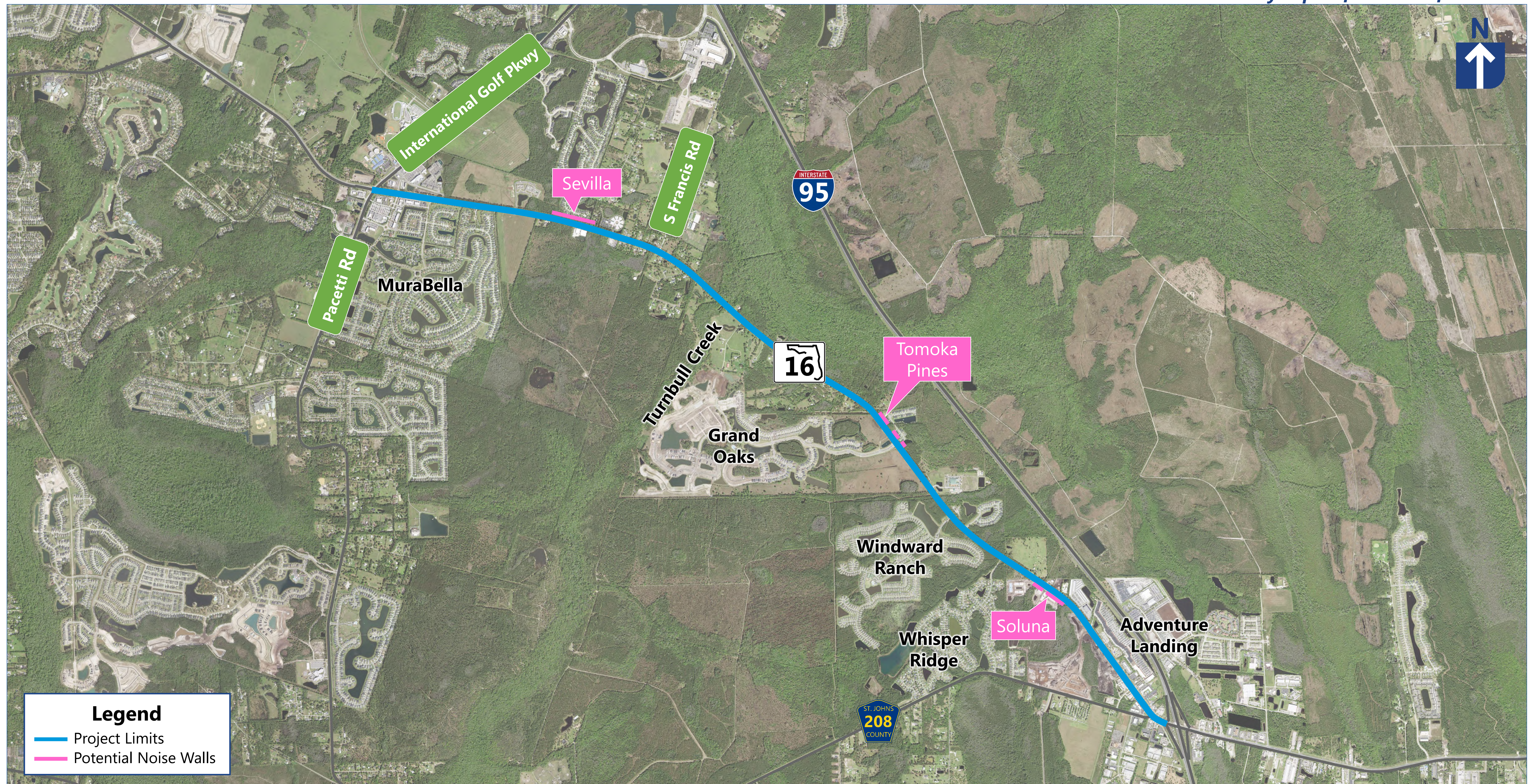
- Improved safety
- Increased efficiency
- Shorter wait times
- Cost effective



- Motorists on Turnbull Creek Road wishing to travel through the SR 16 intersection will need to head east on SR 16 and perform a U-turn at Turning Point at Calvary (shown in a yellow arrow)
- Motorists on Orient Drive wishing to travel through the SR 16 intersection will need to head west on SR 16 and perform a U-turn west of Turnbull Creek Road (shown in an orange arrow).

Potential Noise Walls

See the Noise Study Report for more information



Preferred Pond Locations

