



# Public Hearing

Virtual: Tuesday, August 26, 2025

In-Person: Thursday, August 28, 2025

## SR 16 Project Development and Environment (PD&E) Study

From International Golf Parkway to I-95

St. Johns County, Florida

Financial Management Number: 210447-5

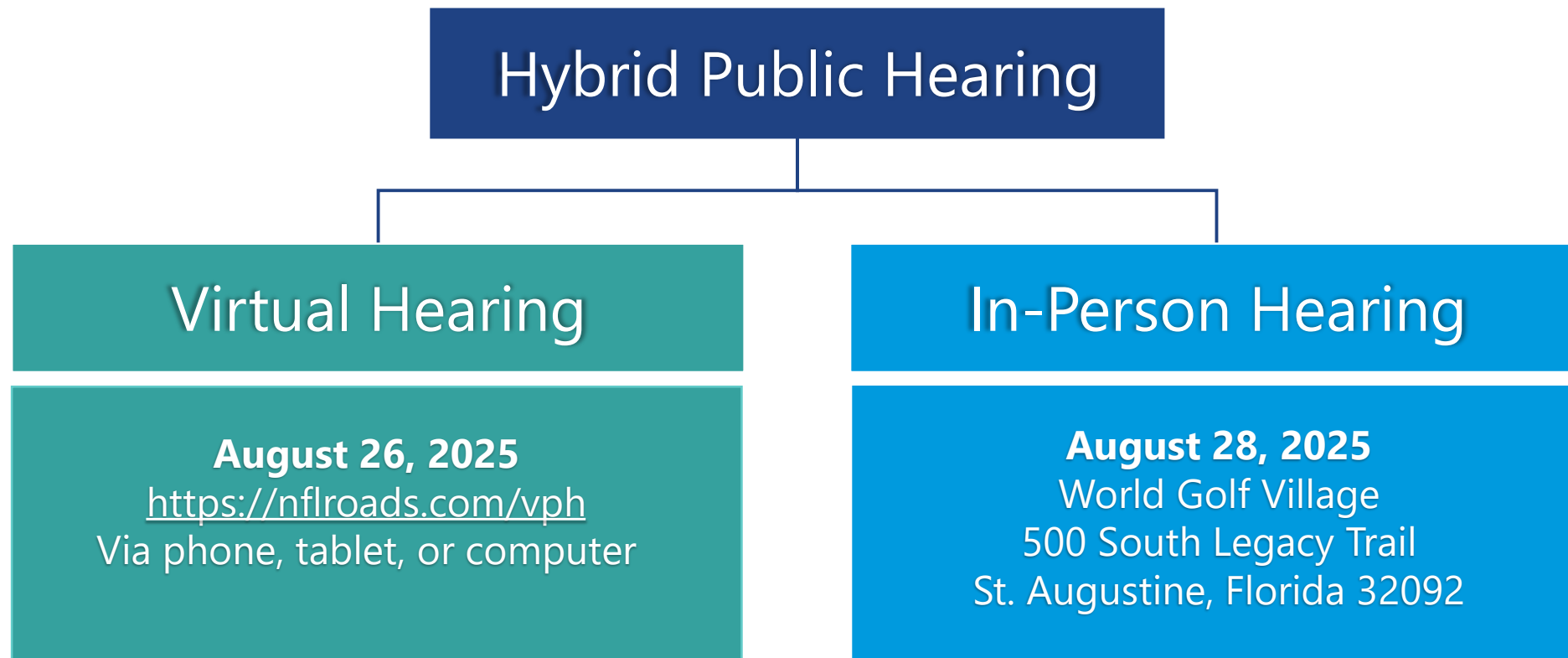
Efficient Transportation Decision-Making (ETDM) Number: 14535





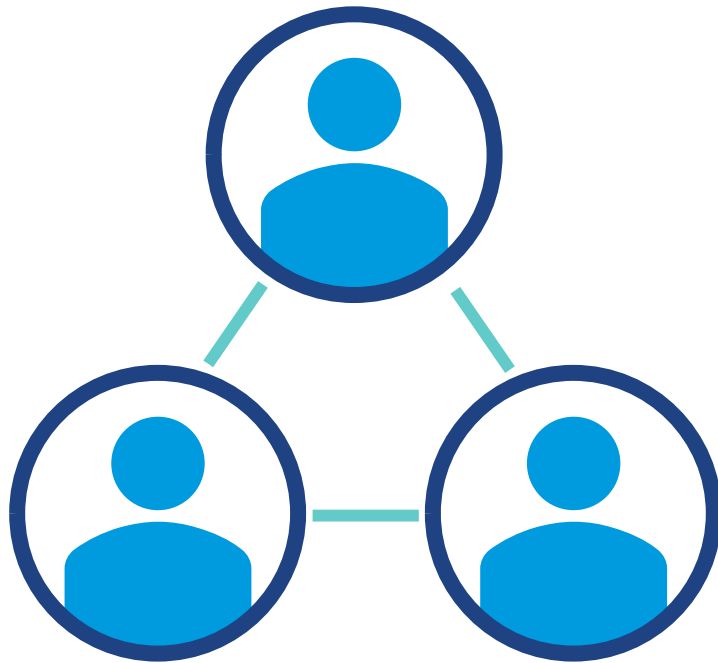
# Hybrid Public Hearing

This Public Hearing is being conducted in a hybrid format:





# Public Hearing Components



Open House



Presentation



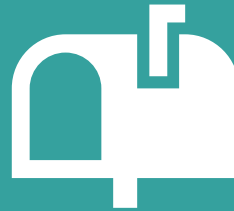
Formal Comment Period



# Public Notifications



**Newspaper**



**Property  
Owner/Tenant  
Letters**



**You Tube**

**Social Media**



**Florida  
Administrative  
Register**



**Emails to Project  
Contact List**



**Project Website:**  
[www.nflroads.com/SR16](http://www.nflroads.com/SR16)



# Federal and State Requirements



- Americans with Disabilities Act of 1990 (ADA)
- Title VI of the Civil Rights Act of 1964 and Other Nondiscrimination Laws
- 49 CFR Part 24, Uniform Relocation Assistance and Real Property Acquisition for Federal and Federally-Assisted Programs
- 40 CFR Part 1506, Other Requirements of NEPA
- Section 120.525, F.S. Meetings, hearings, and workshops
- Section 286.011, F.S. Government in the Sunshine Law
- Section 335.199, F.S. Transportation projects modifying access to adjacent property
- Section 339.155, F.S. Transportation Planning



## Project Information

### **St. Johns County Main Branch Library**

1960 N. Ponce De Leon Blvd

St. Augustine FL, 32084

### **Project Website:**

[www.nflroads.com/SR16](http://www.nflroads.com/SR16)





*Public participation is solicited without regard to race, color, national origin, age, sex, religion, disability, or family status.*



# Title VI – Nondiscrimination Program



Persons may file a formal complaint(s) by writing to:

**Dorothy Neal**

**District 2 Title VI Coordinator**

Florida Department of Transportation

District 2

1109 South Marion Avenue, MS 2006

Lake City, Florida 32025-5874

(386) 961-7616

[Dorothy.Neal@dot.state.fl.us](mailto:Dorothy.Neal@dot.state.fl.us)

**Aldrin T. Sanders**

**Civil Rights Program Manager**

Florida Department of Transportation

Equal Opportunity Office

605 Suwannee Street, MS 65

Tallahassee, Florida 32399-0450

(850) 414-4764

[Aldrin.Sanders@dot.state.fl.us](mailto:Aldrin.Sanders@dot.state.fl.us)



# Memorandum of Understanding Disclosure



Florida Department of Transportation

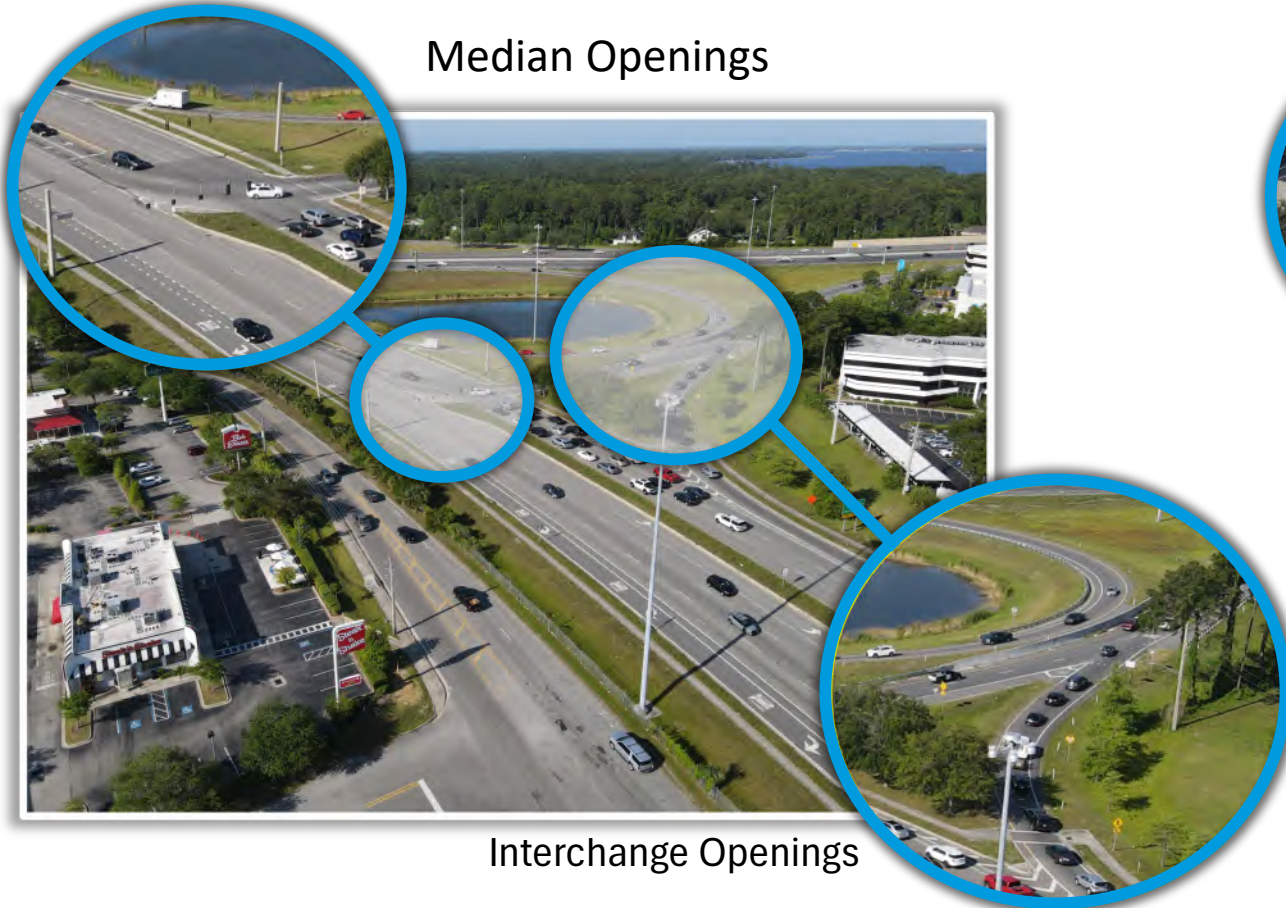
The environmental review, consultation, and other actions required by applicable federal environmental laws for this project are being, or have been, carried out by the Florida Department of Transportation (FDOT) pursuant to 23 U.S.C. § 327 and a Memorandum of Understanding dated May 26, 2022, and executed by the Federal Highway Administration and the FDOT.



# Access Management

Access management is the careful planning of the location, type, and design of access to properties, businesses, and homes.

Median Openings



Interchange Openings

Driveway Openings

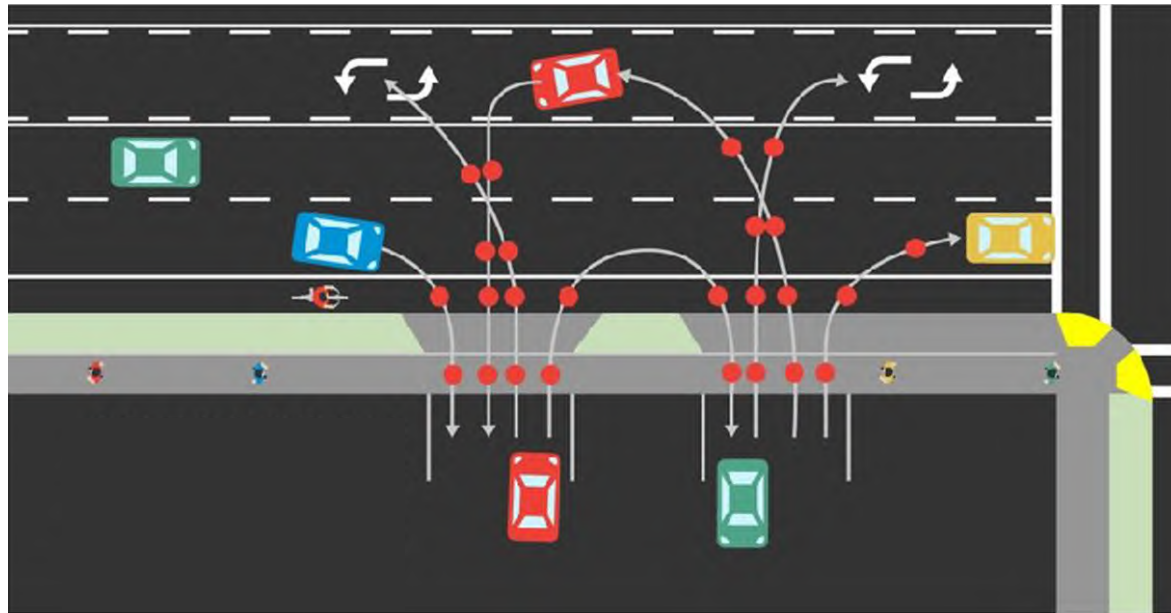


Traffic Signals

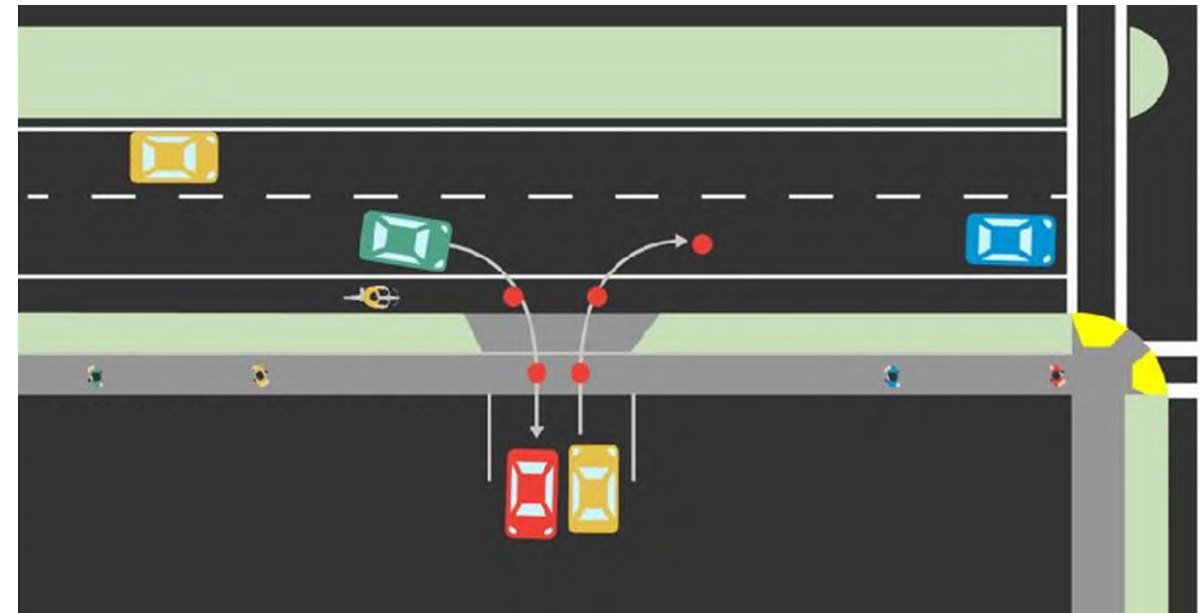


# How Does Access Management Improve Safety?

**MORE CONFLICTS**



**LESS CONFLICTS**





# Access Management



## ACCESS MANAGEMENT REVIEW COMMITTEE

**Attention: Carlos Nieto, PE**

Florida Department of Transportation

2198 Edison Avenue, MS 2815

Jacksonville, Florida 32204

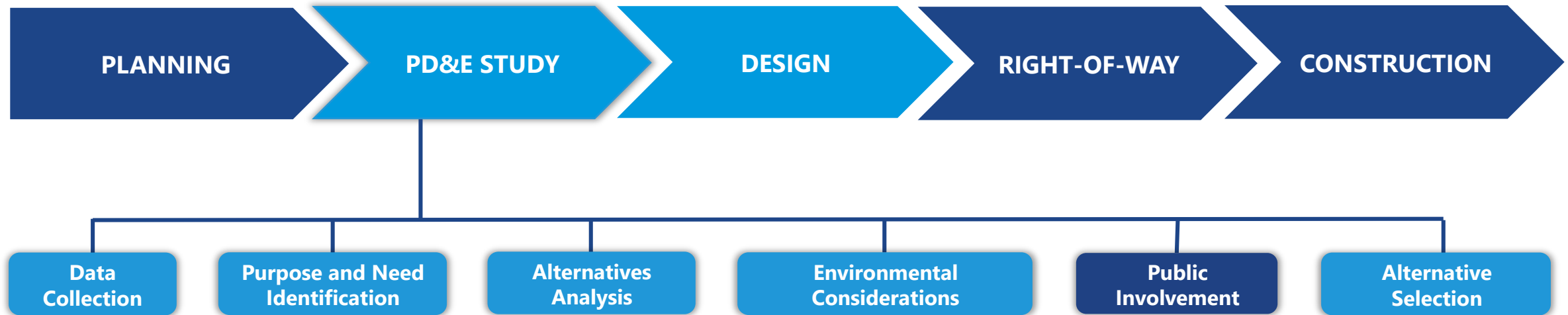
Telephone: (904) 360-5455 or (800) 207-8236

Email: [CarlosA.Nieto@dot.state.fl.us](mailto:CarlosA.Nieto@dot.state.fl.us)



# Project Phases

*We are here!*





# Alternatives Public Meeting





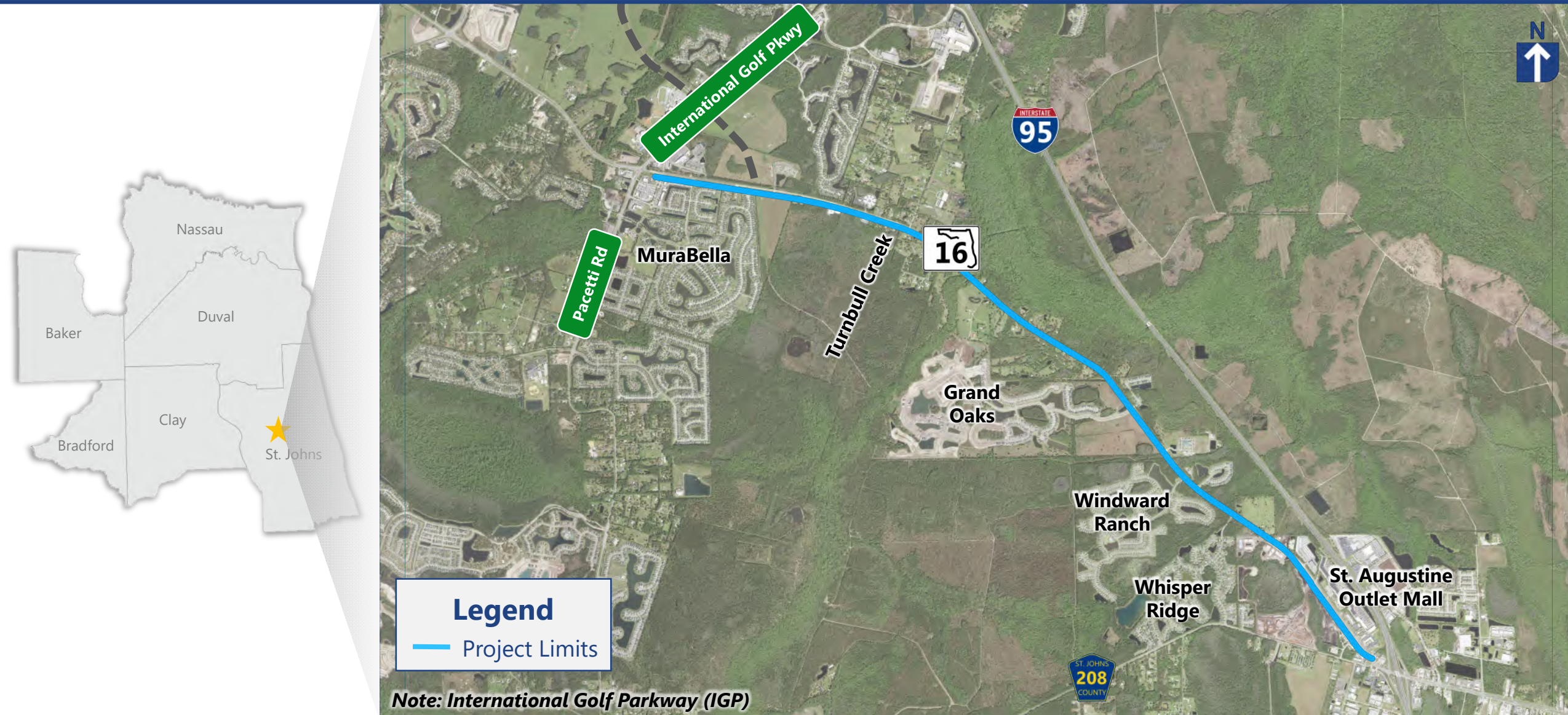
# Purpose of the Public Hearing

- Share information about the proposed improvements
- Discuss the project and its impacts
- Receive public feedback





# Project Location





# Purpose and Need

- What is the purpose of the project?
  - Improve traffic mobility
  - Reduce congestion
  - Improve safety
- Why is the project needed?
  - Address traffic congestion
  - Safety concerns
  - Accommodate planned developments

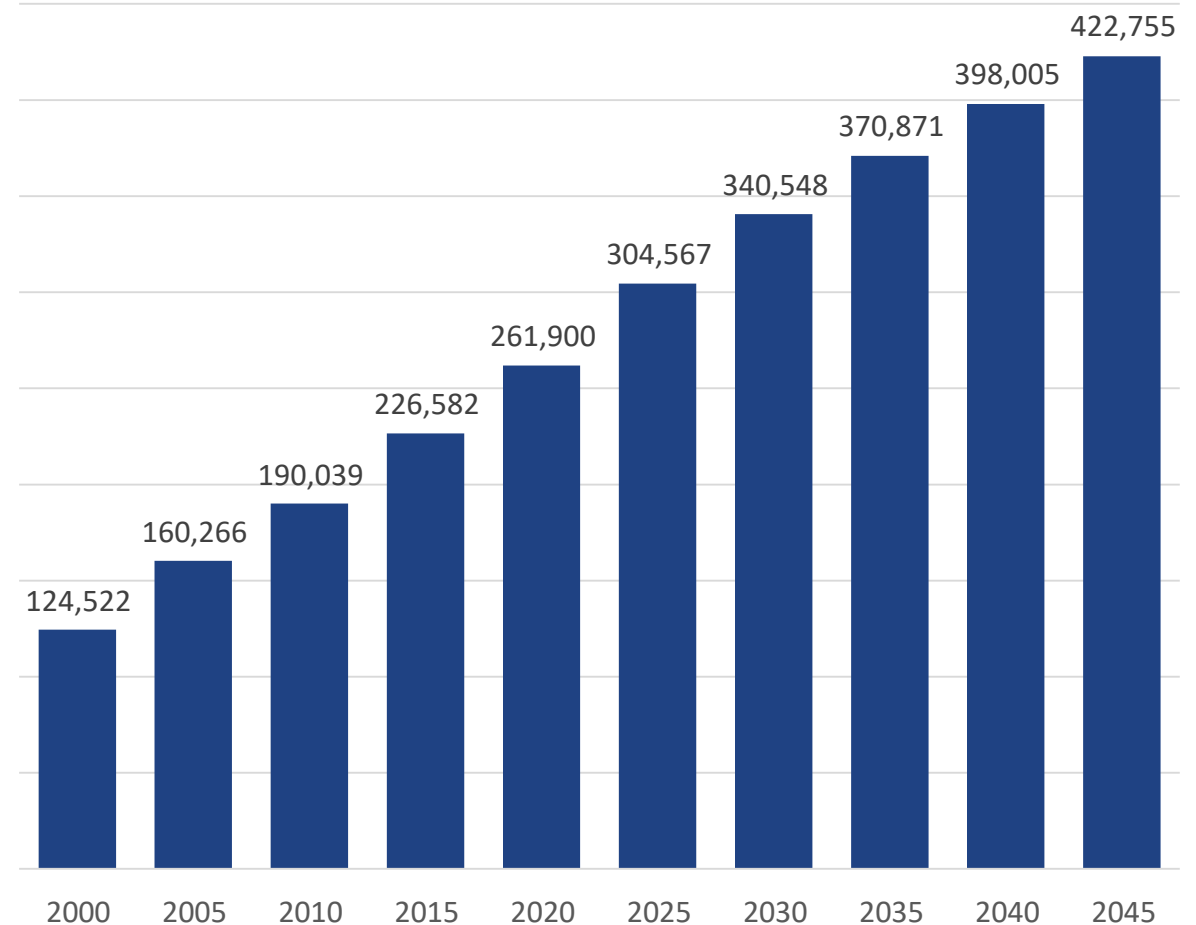




# Population Growth



## St. Johns County Population Growth



Source: University of Florida's Bureau of Economic and Business Research

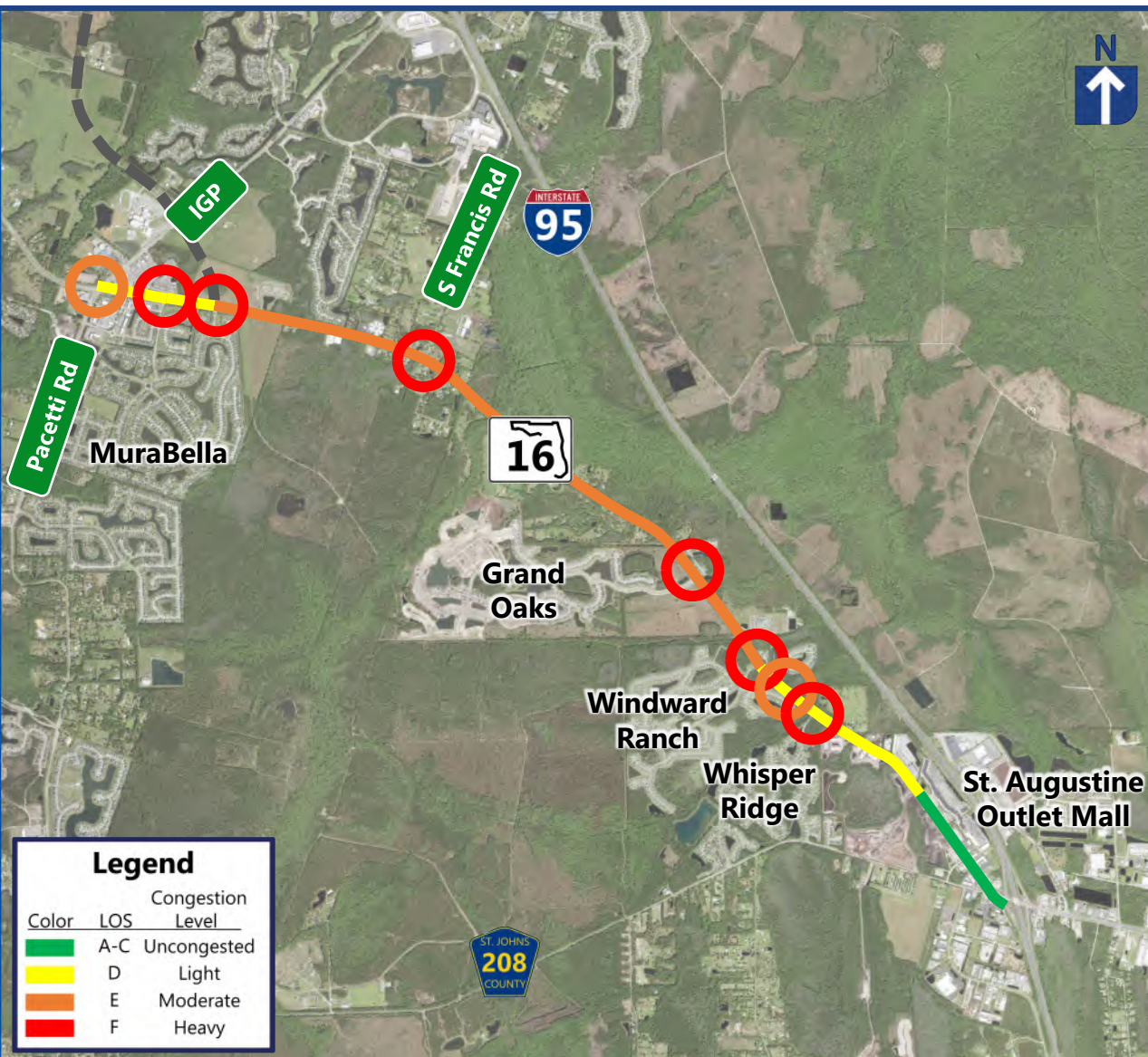


## CAPACITY – LEVEL OF SERVICE (LOS)





# Existing Traffic Analysis



- **Segments:**

- International Golf Parkway to San Giacomo Road: LOS D
- **San Giacomo Road to Windward Ranch Boulevard: LOS E**
- Windward Ranch Boulevard to the North Outlet Mall Entrance: LOS D
- The North Outlet Mall Entrance to the I-95 southbound ramp terminal: LOS C

- **Intersections Operating at LOS E or Lower:**

- International Golf Parkway
- Commerce Plaza Boulevard
- San Giacomo Road
- South Francis Road
- Turnbull Creek Road
- Windward Ranch Boulevard
- Downs Corner Road
- Whisper Ridge Drive



# Crash History

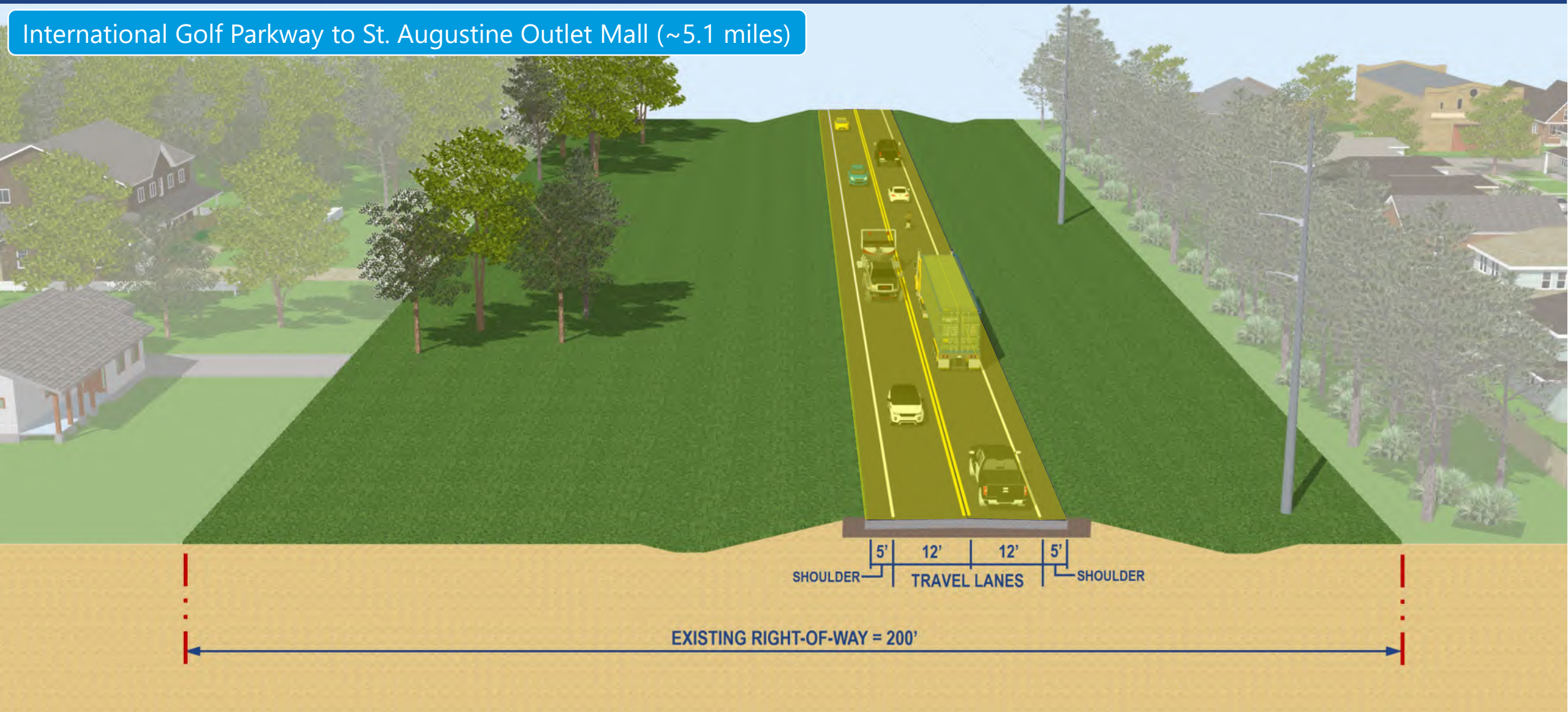
- 735 crashes between 2018-2022
- 76% of crashes resulted in no injury
- 4 fatalities
- All intersections along SR 16 within the study area were high crash locations





# Existing Conditions

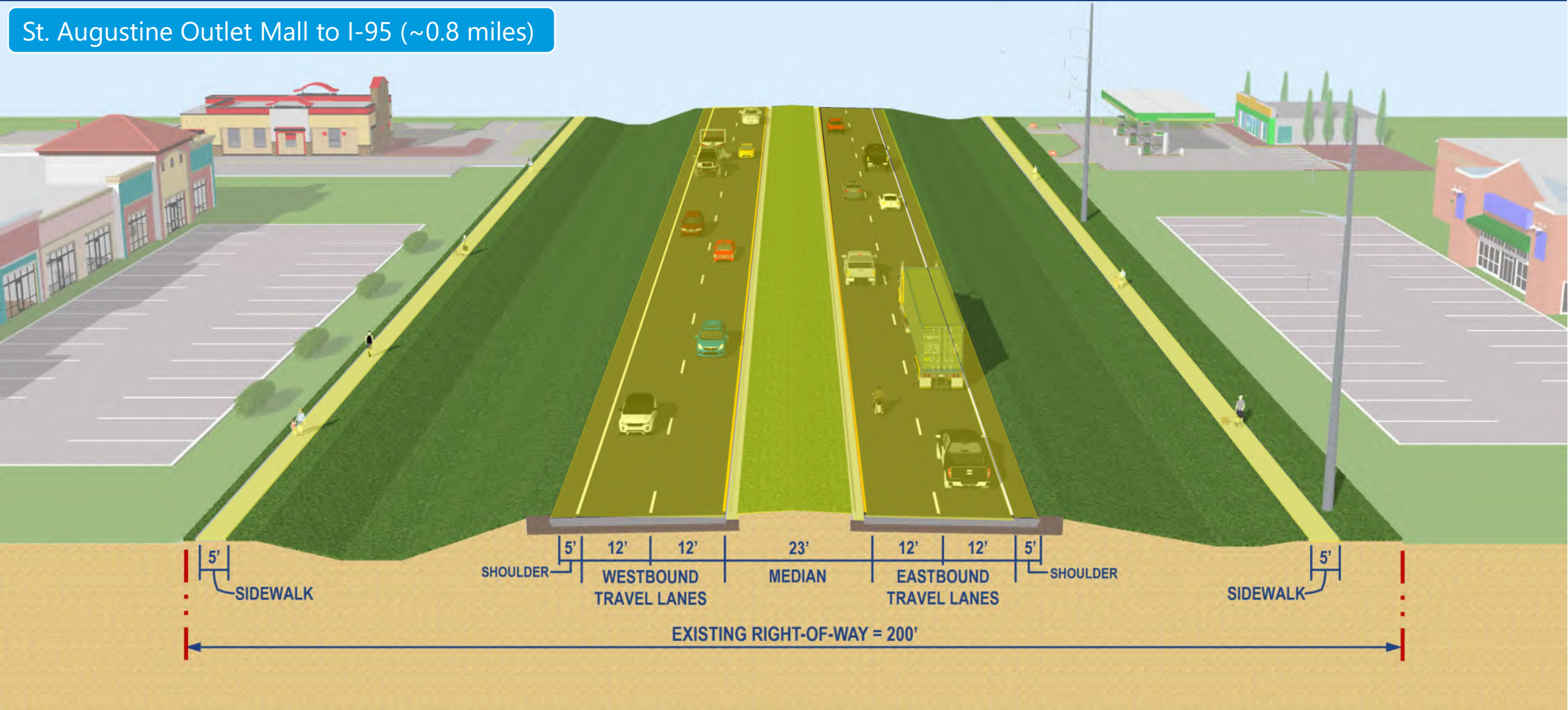
International Golf Parkway to St. Augustine Outlet Mall (~5.1 miles)





# Existing Conditions

St. Augustine Outlet Mall to I-95 (~0.8 miles)





# Existing Conditions





# Alternatives Evaluated

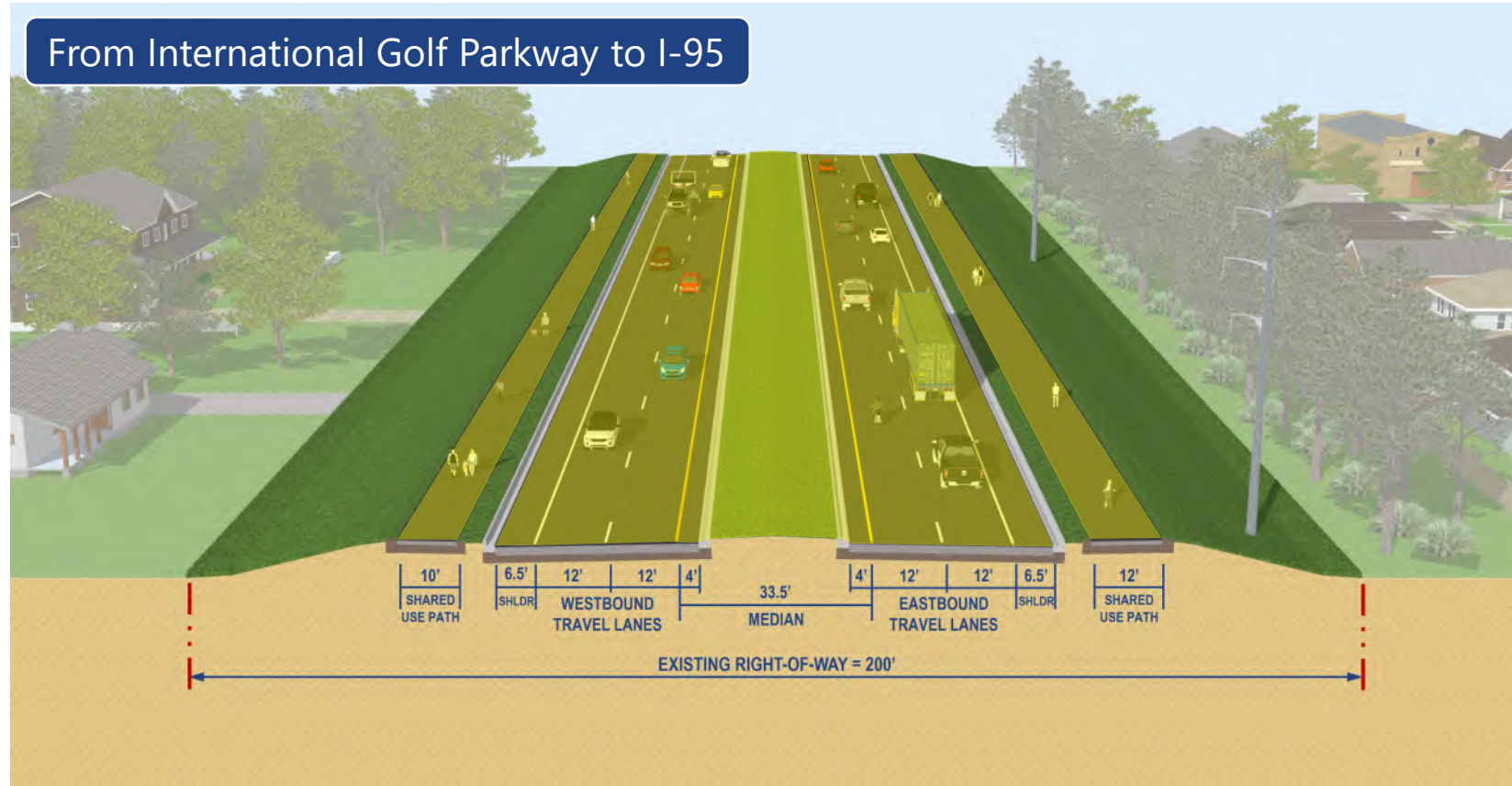
- No-Build Alternative
  - Assumes no improvements are made
  - Provides a baseline condition to compare and measure the effects of the Build Alternative
- Build Alternative (Presented at the Alternatives Public Meeting)
- A detailed comparison of the Build and No-Build Alternatives is located in the Preliminary Engineering Report



# Build Alternative



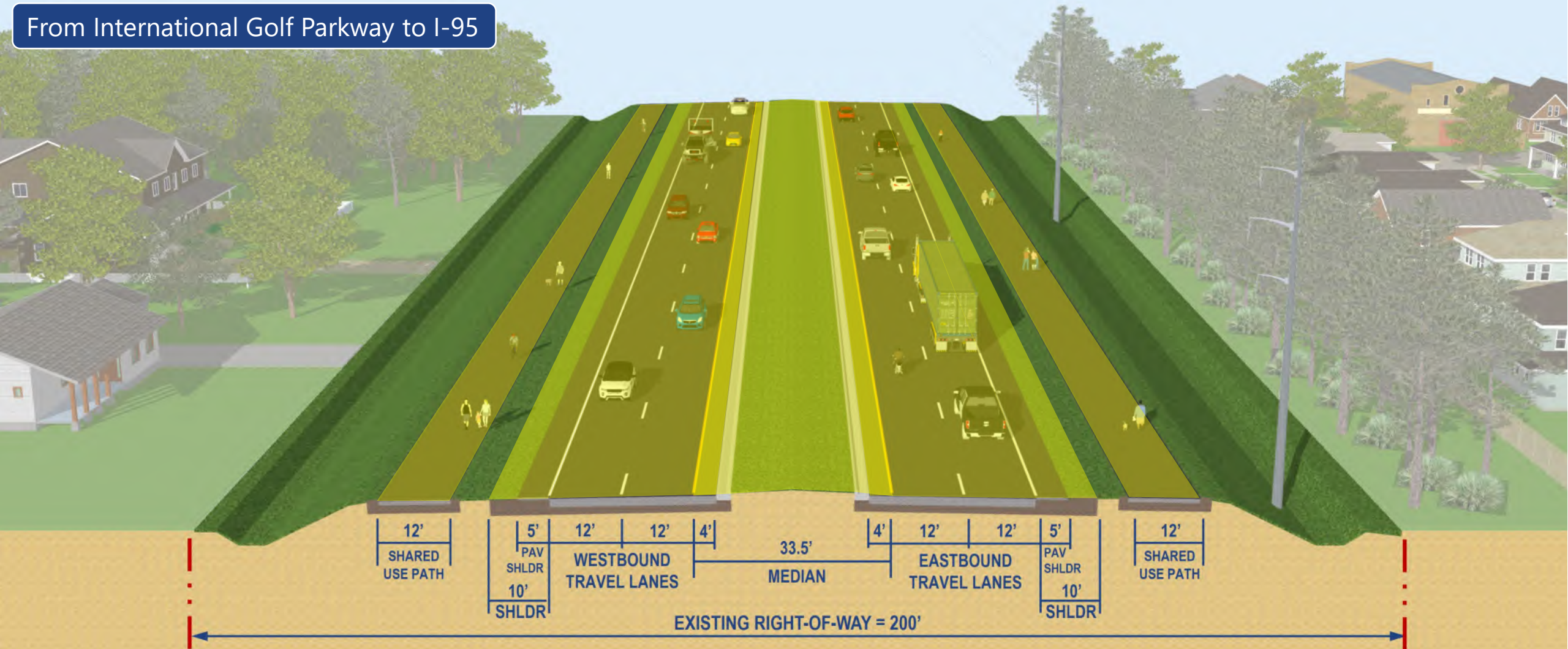
From International Golf Parkway to I-95





# Preferred Alternative

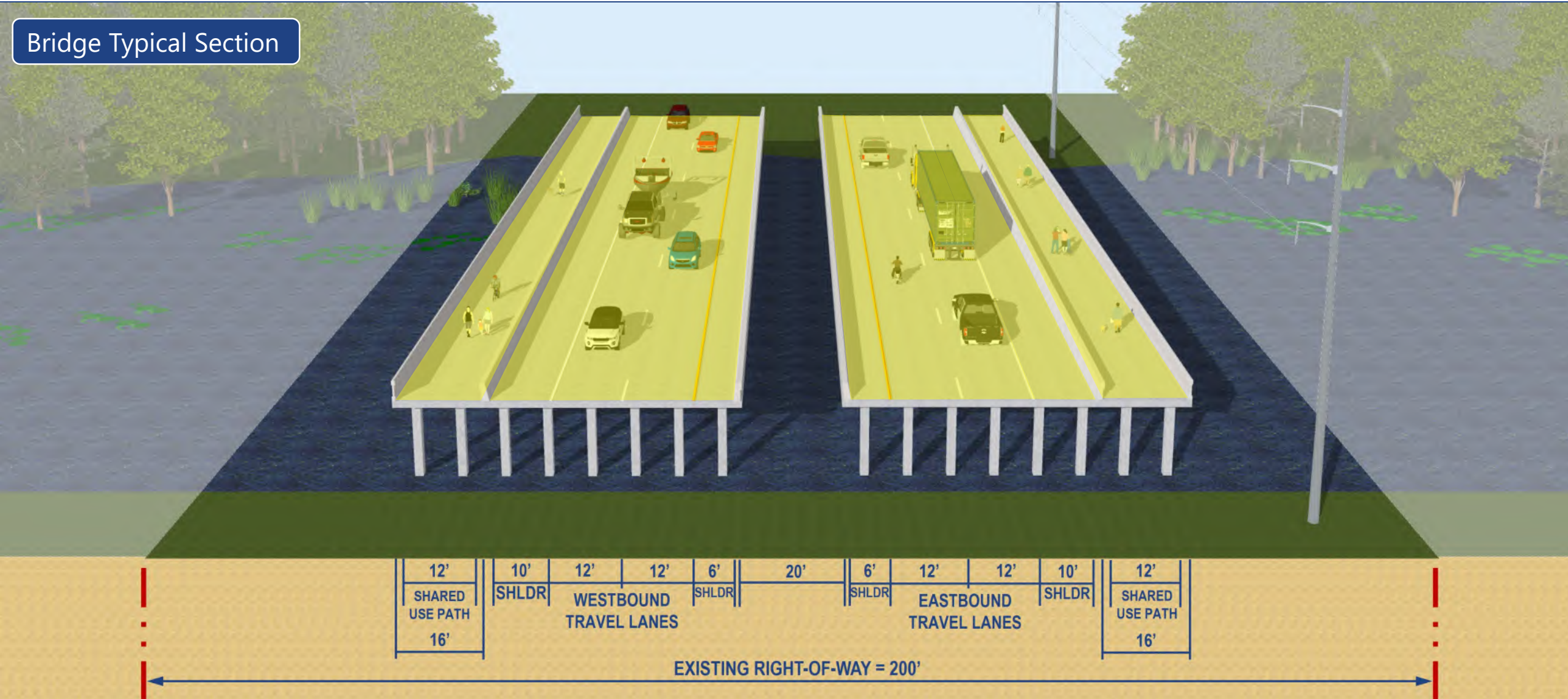
From International Golf Parkway to I-95





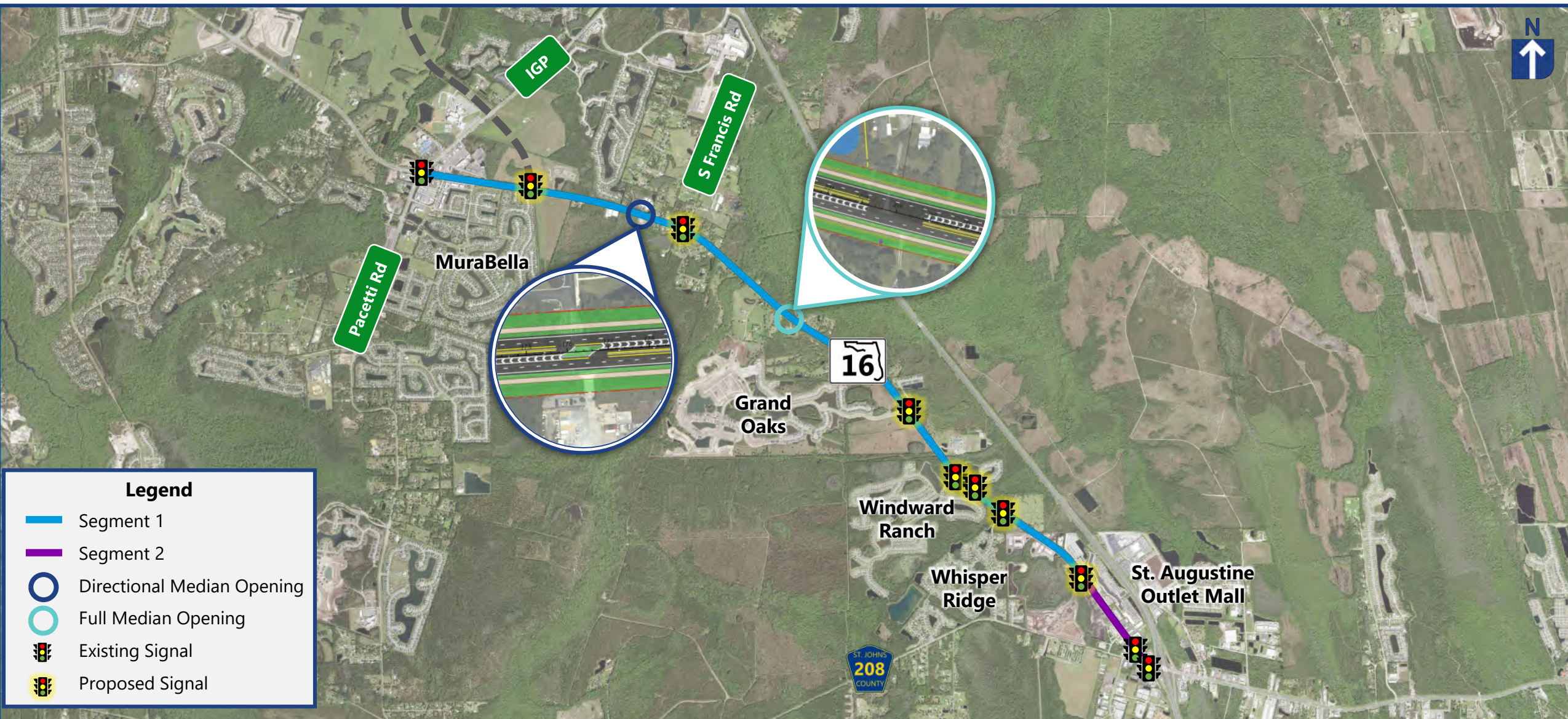
# Preferred Alternative

Bridge Typical Section



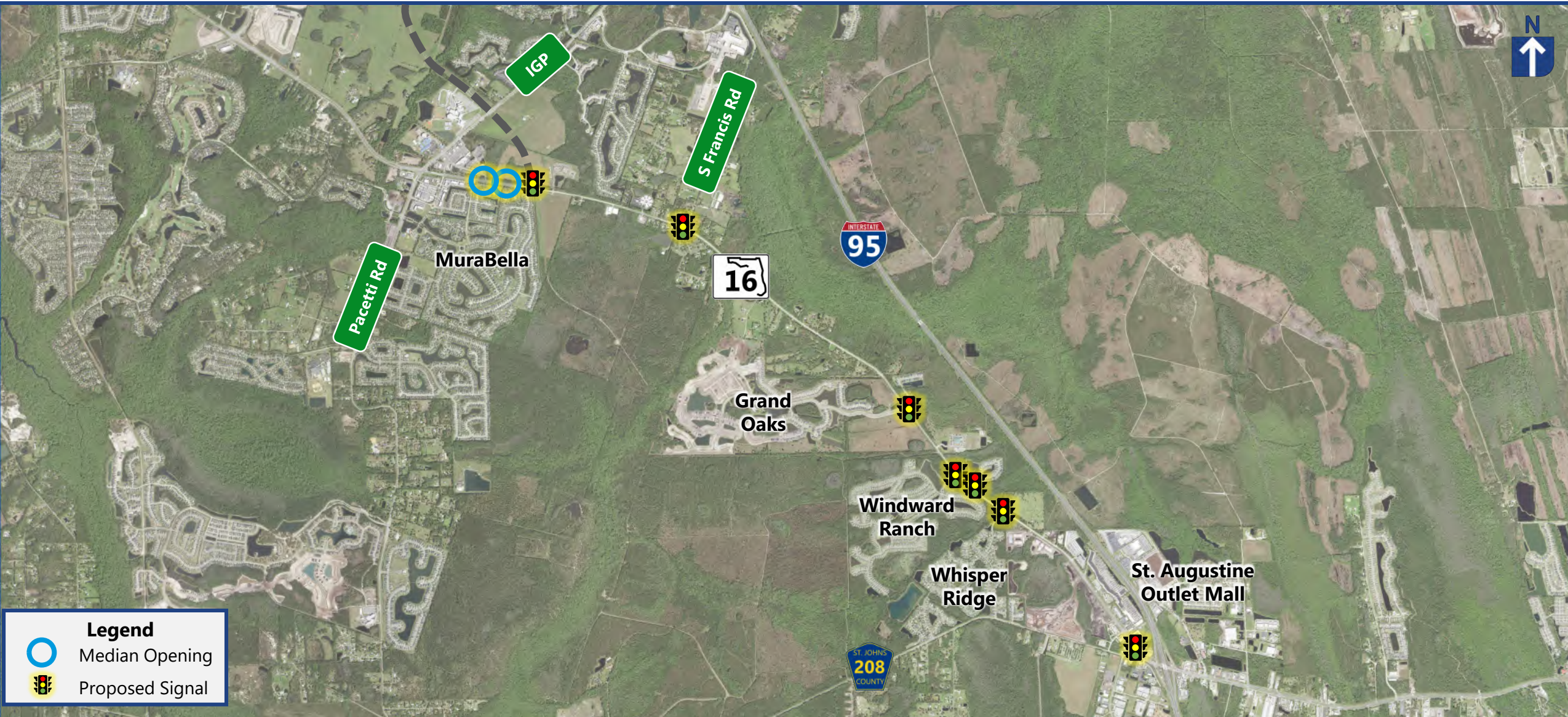


# Access Management





# Alternative Intersections



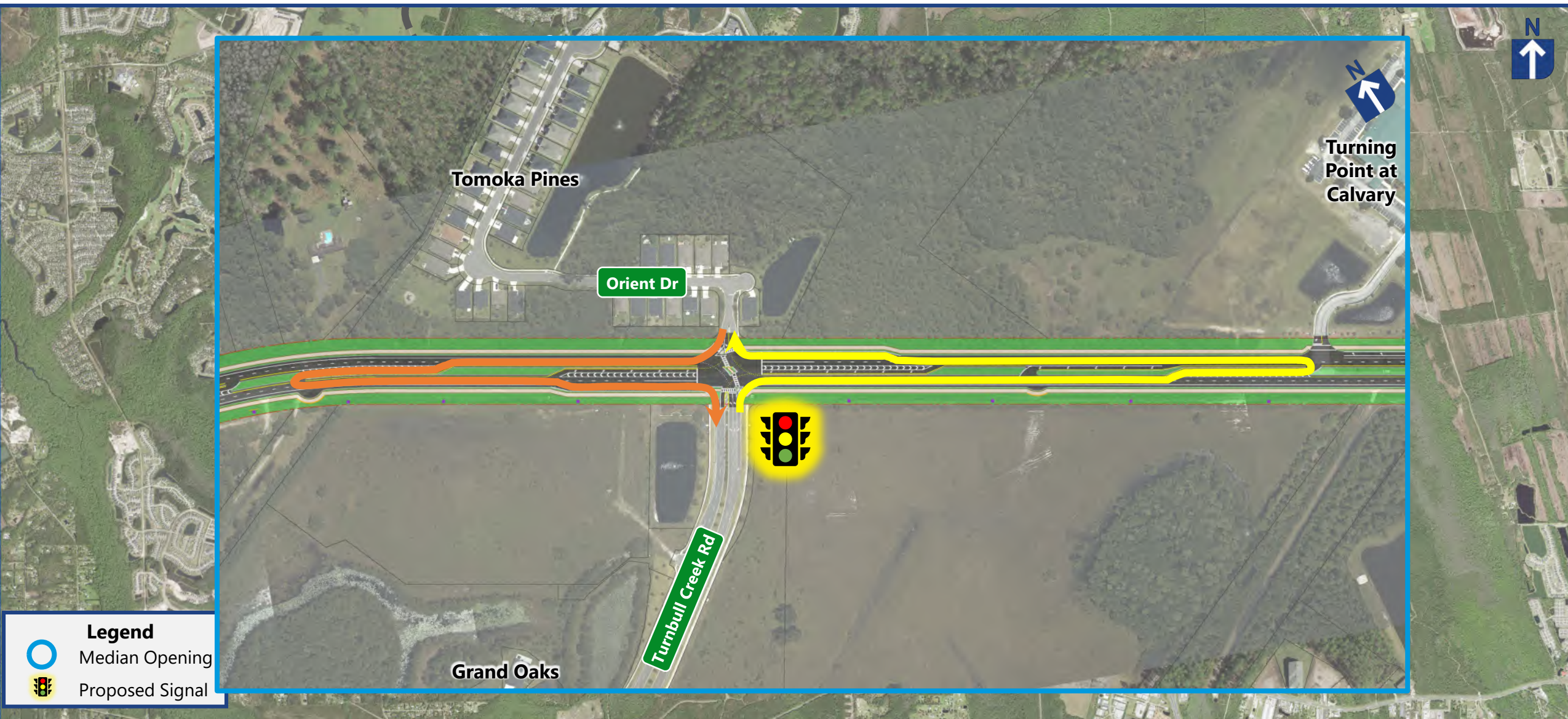


# Partial Median U-Turn Intersections





# Thru-Cut Intersections



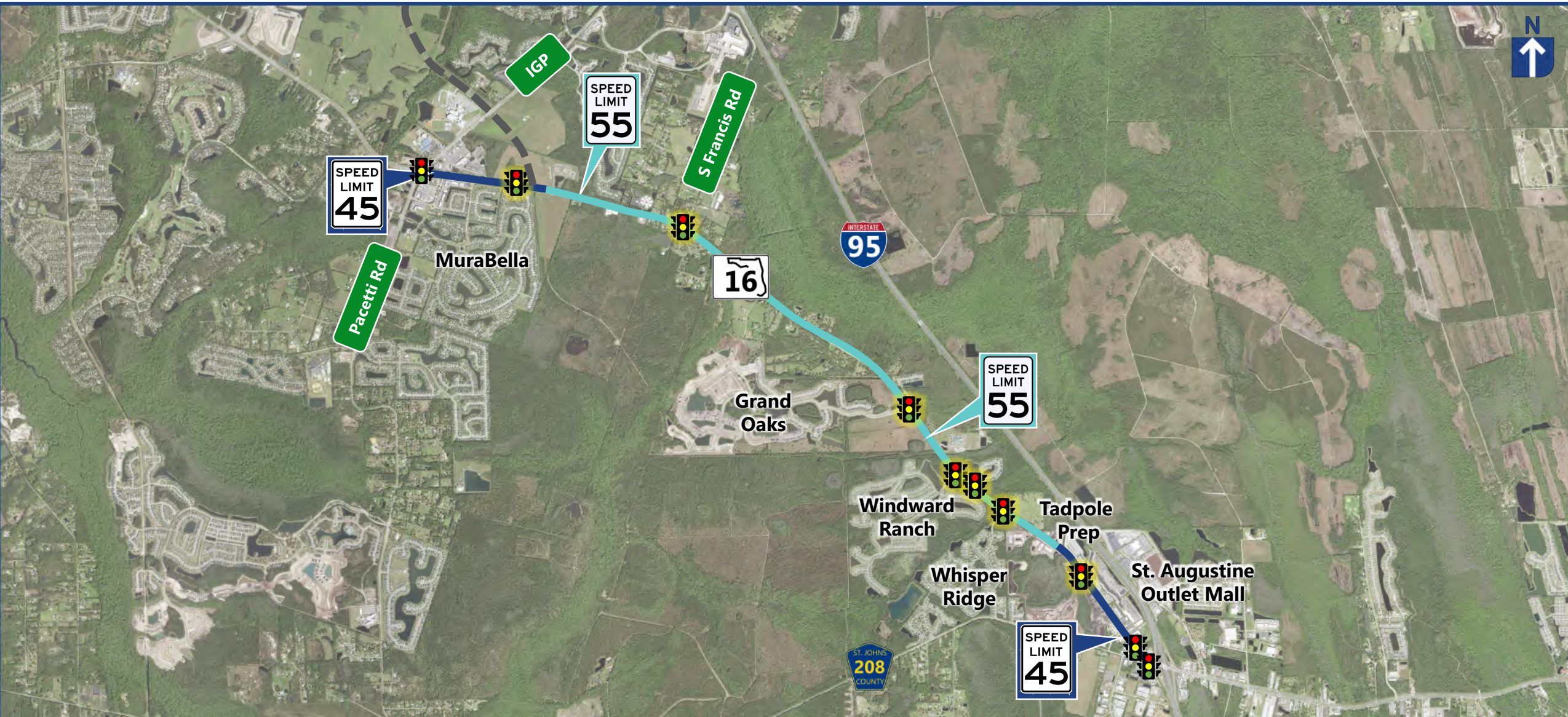


# Hybrid MUT / Thru-Cut Intersections





# Preferred Alternative





# Proposed Pond Sites



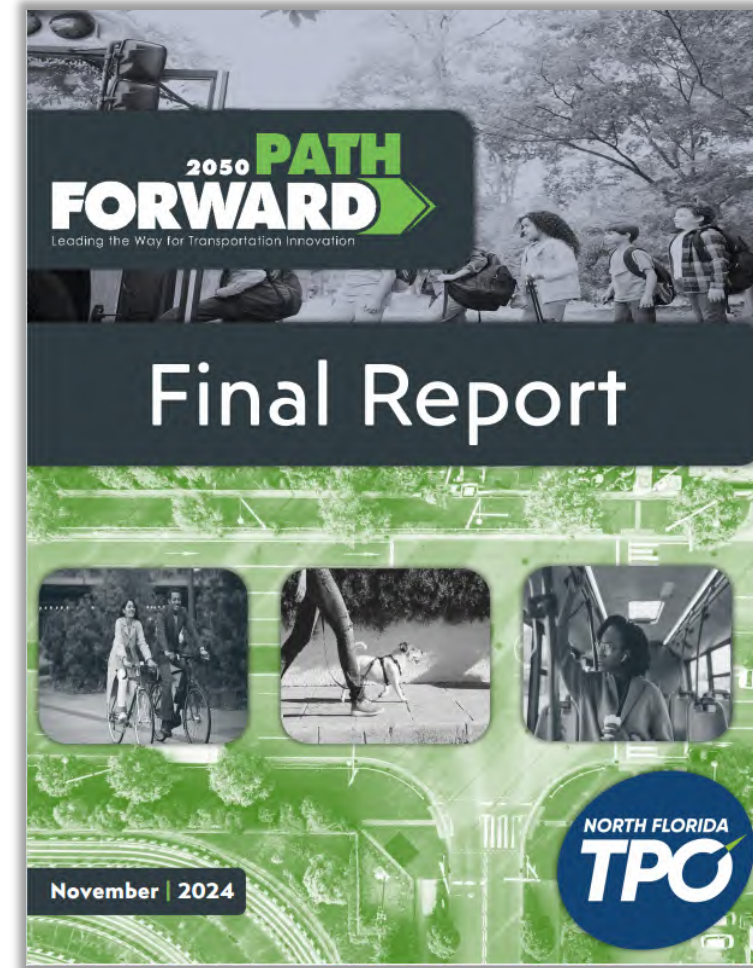


# Evaluation Matrix

Alternative Option	Improves Safety	Adds Capacity	Improves Level of Service	Accommodates Future Growth	Construction Cost
No-Build Alternative	✗	✗	✗	✗	\$0
Preferred Alternative	✓	✓	✓	✓	\$189 Million



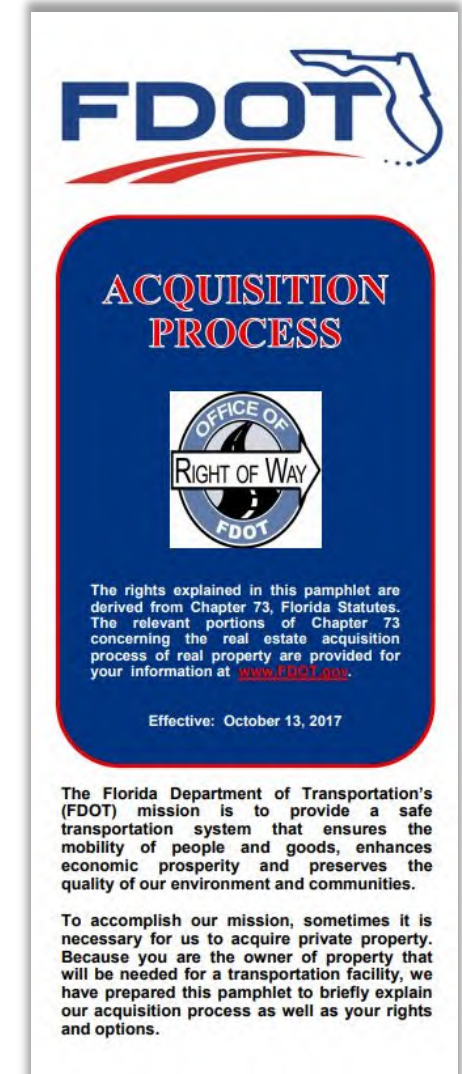
# Planning Consistency





## Four parcels impacted

*All right-of-way acquisition will be conducted in accordance with Florida Statute 339.09 and Section 421.55 and also the Federal Uniform Relocation Assistance and Real Property Acquisition Policies Act of 1970, commonly known as the Uniform Act.*





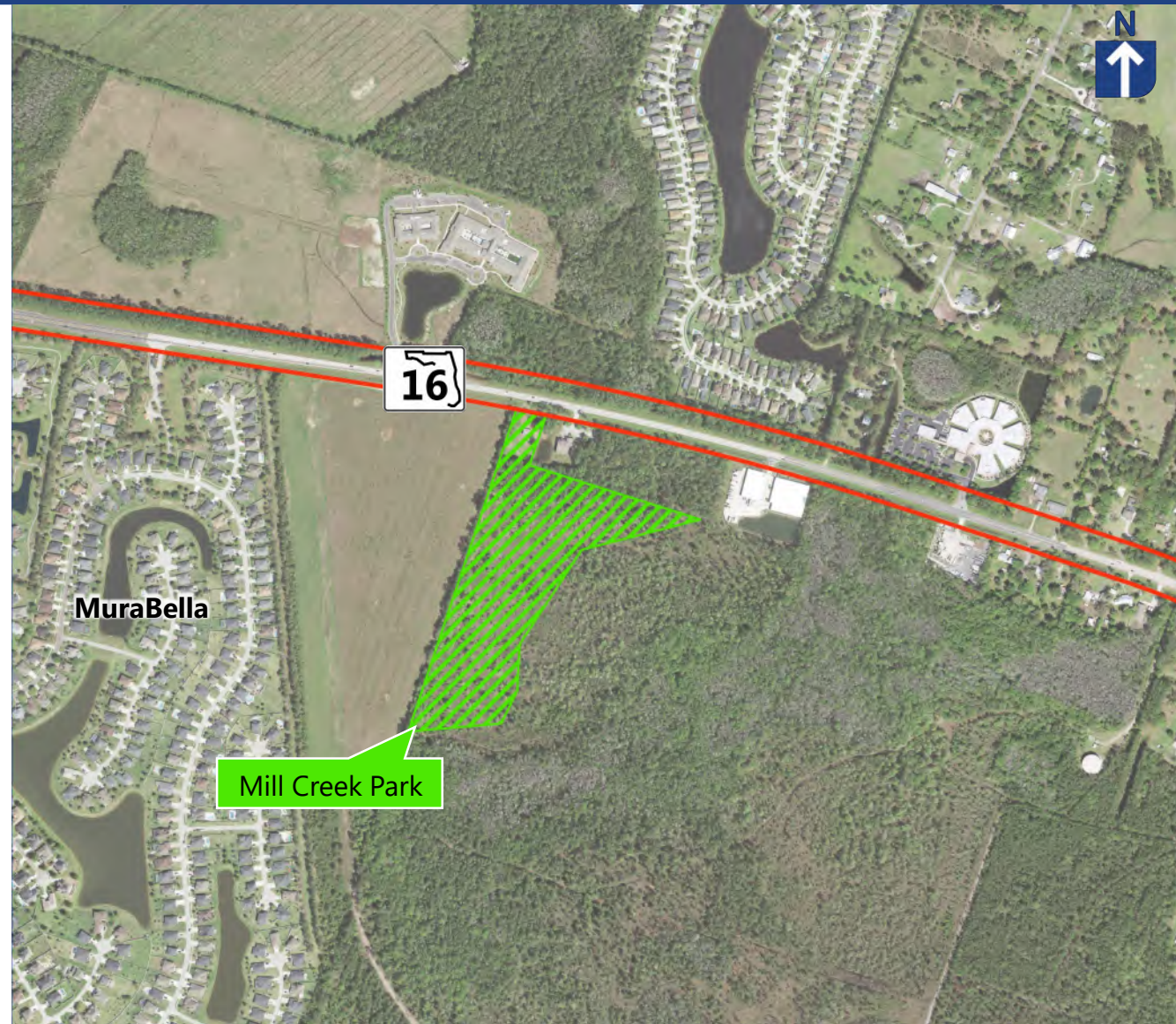
# Environmental Considerations





# Social and Community Impacts

- Four parcels impacted
- Community focal points, no impacts
- Mill Creek Park - Section 4(f) Resource, no impacts
- Enhanced mobility and connectivity
- ***No adverse effects*** to social and community resources





# Cultural Resources

- Cultural resource analysis performed
- No eligible National Register of Historic Places resources are located in the study area
- ***No adverse effect*** on cultural resources

CULTURAL RESOURCE ASSESSMENT SURVEY  
FOR STATE ROAD 16 FROM INTERNATIONAL GOLF PARKWAY TO I-95  
ST. JOHNS COUNTY, FLORIDA

FINANCIAL MANAGEMENT No. 210447-5-32-01  
SEARCH PROJECT No. 230292

PREPARED FOR

FLORIDA DEPARTMENT OF TRANSPORTATION, DISTRICT 2  
LAKE CITY, FLORIDA

By

SEARCH

JANUARY 2024

THE ENVIRONMENTAL REVIEW, CONSULTATION, AND OTHER ACTIONS REQUIRED BY APPLICABLE FEDERAL ENVIRONMENTAL LAWS FOR THIS PROJECT ARE BEING, OR HAVE BEEN, CARRIED OUT BY THE FLORIDA DEPARTMENT OF TRANSPORTATION (FDOT) PURSUANT TO 23 U.S.C. §327 AND A MEMORANDUM OF UNDERSTANDING DATED MAY 26, 2022, AND EXECUTED BY THE FEDERAL HIGHWAY ADMINISTRATION (FHWA) AND FDOT.



# Protected Species and Habitat

- The project ***may affect, but is not likely to adversely affect*** the following federally listed species:
  - Wood Stork
  - Eastern Indigo Snake
- ***No adverse effects are anticipated*** for state listed species.





# Wetlands and Surface Waters

- Evaluated in accordance with Federal Executive Order 11990
- Preferred Alternative Impacts:
  - 25 acres of wetlands





# Floodplains

- Evaluated in accordance with Federal Executive Order 11988
- Floodplain compensation will be provided in roadside ditches and stormwater management facilities
- Encroachments within this project are classified as ***minimal, not significant***





# Noise





# Contamination

- Potential Contamination Impacts:
  - 10 medium risk sites
  - 2 high risk sites
- Additional evaluations of medium and high sites
- Options to avoid, minimize, or mitigate will be evaluated



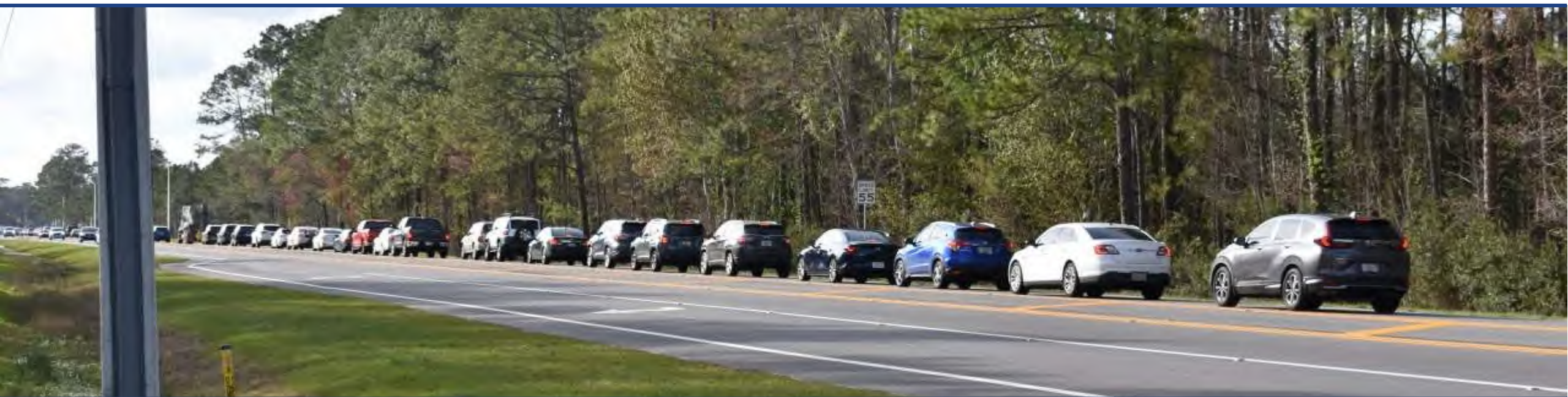




All applications for required permits will be made at the appropriate time.



# Project Schedule & Future Costs



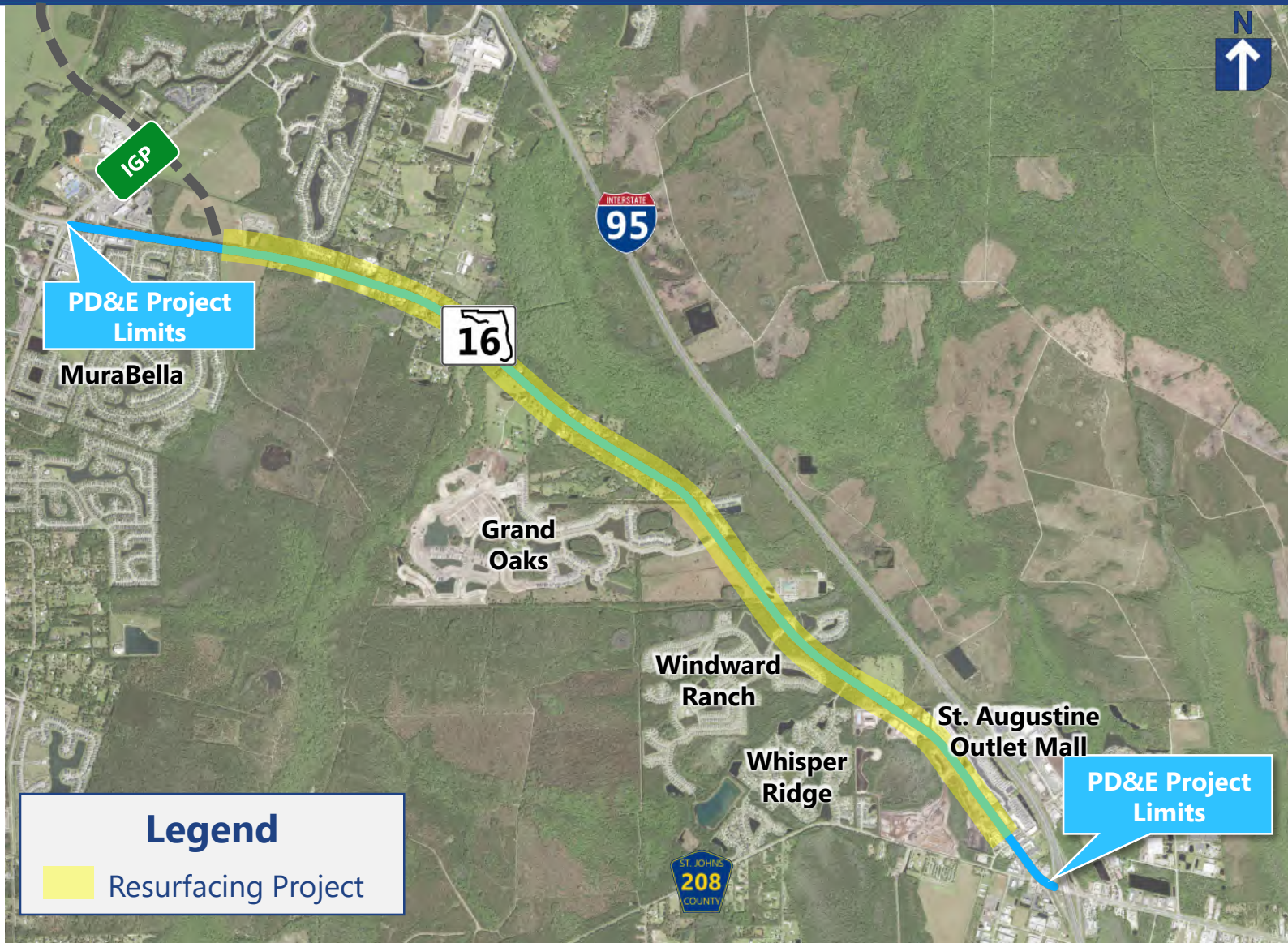
PHASE	YEAR		COSTS
PD&E	Ongoing		
Design	Ongoing		
Right-of-Way	2025/2026		\$17.2 Million
Construction Engineering and Inspection (CEI)	Unfunded		\$18.9 Million
Construction	Unfunded		\$189 Million

*Note: Schedule and costs are preliminary and subject to change*



# SR 16 Resurfacing Project




- FPID Number:  
210447-4
- Project Limits:  
CR 2209 to Toms Road
- Funding:
  - Design: FY 2025
  - Construction: FY 2027





# Next Steps

Note: The schedule is preliminary and subject to change

Project Milestones	2023			2024				2025				2026
	April - June	July - Sept	October - December	January - March	April - June	July - Sept	October - December	January - March	April - June	July - Sept	October - December	January - March
Begin Study												
Data Collection												
Traffic Forecasting and Analysis												
Develop Alternatives												
Alternatives Public Meeting												
Select and Refine Preferred Alternative												
Prepare Documents												
Public Hearing												
Update Documents												
PD&E Project Approval												
Stakeholder Engagement												

**Tonight's  
Public Hearing**



# We Welcome Your Comments





# Contact Information



## **Jared Sweat, Project Manager**

Florida Department of Transportation

1109 S. Marion Avenue, MS 2007

Lake City, Florida 32025

Phone: (386) 961-7462

Email: [Jared.Sweat@dot.state.fl.us](mailto:Jared.Sweat@dot.state.fl.us)

Project Website: [www.nflroads.com/SR16](http://www.nflroads.com/SR16)



# Postmarked Comments

All comments postmarked on  
or before

**September 8, 2025**

Will be included in the Public  
Hearing record

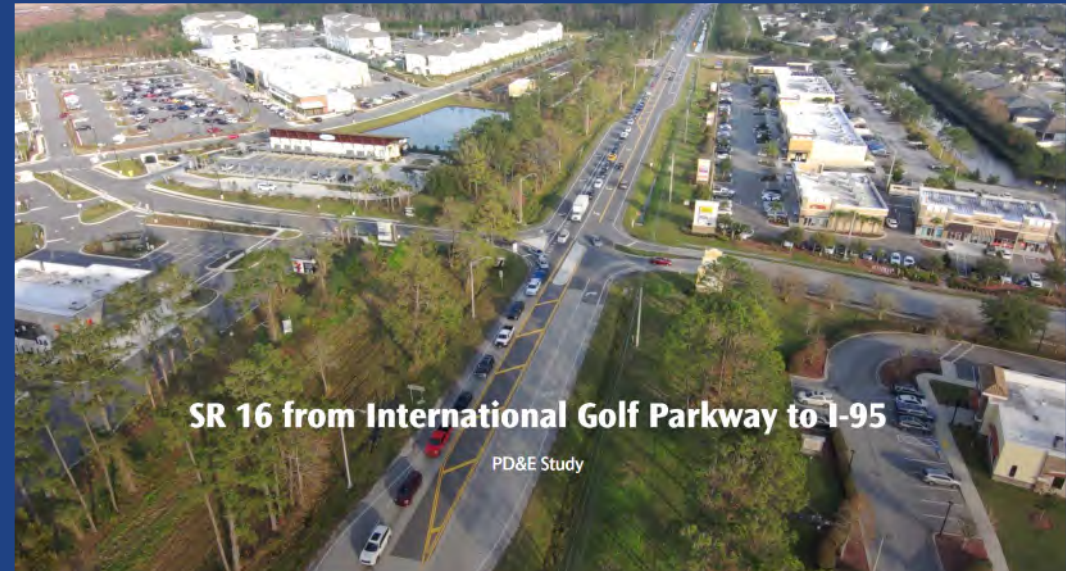




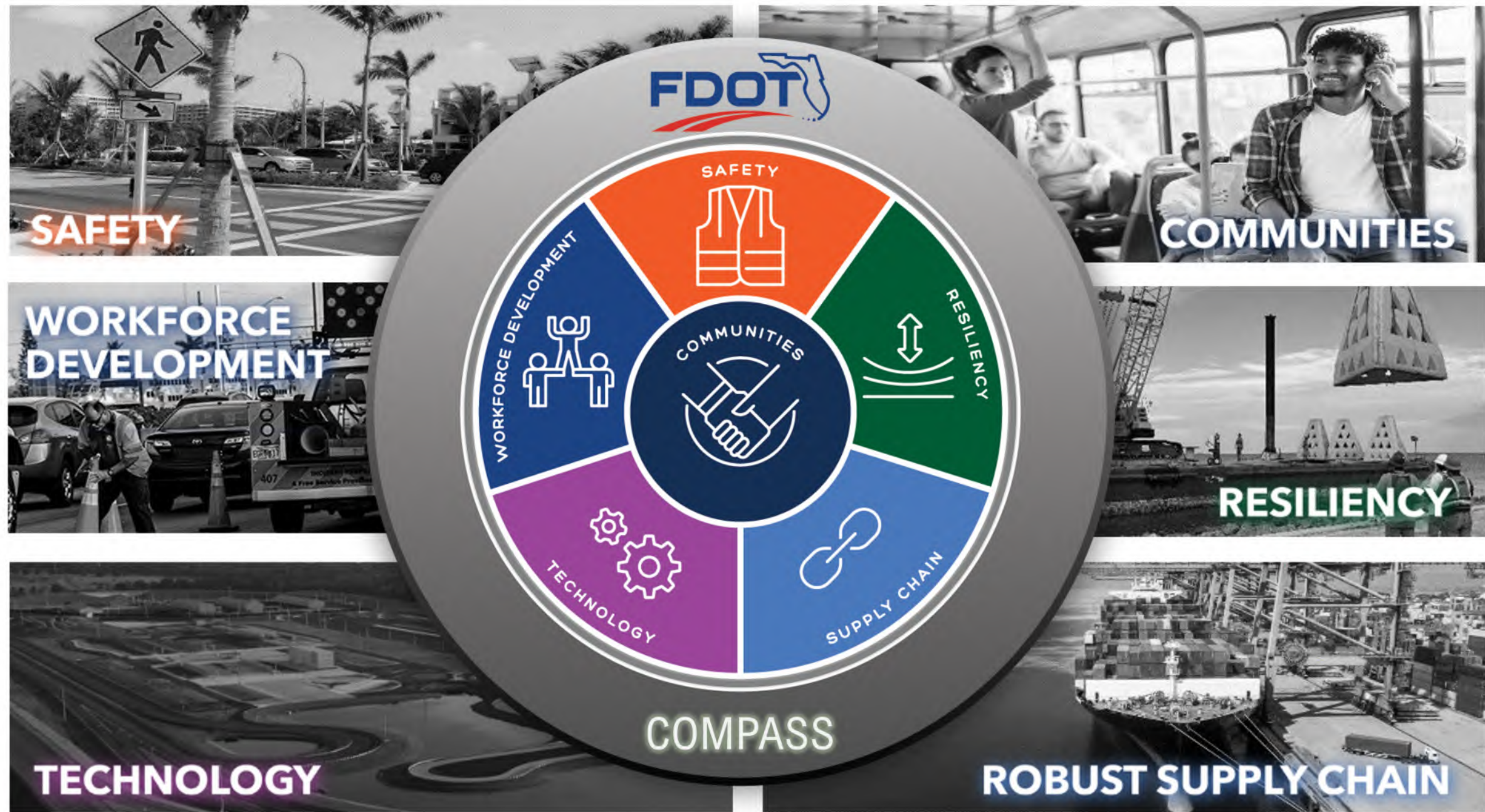
# Project Website

For more information  
regarding the project,  
please visit the project  
website at:

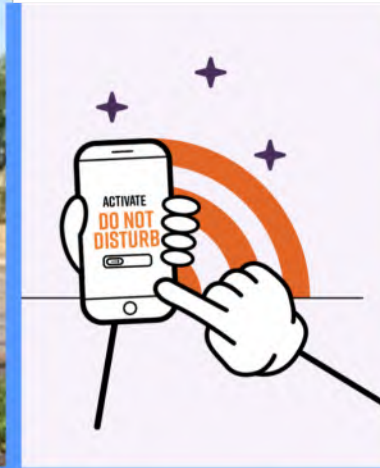
[www.nflroads.com/SR16](http://www.nflroads.com/SR16)















Thank you