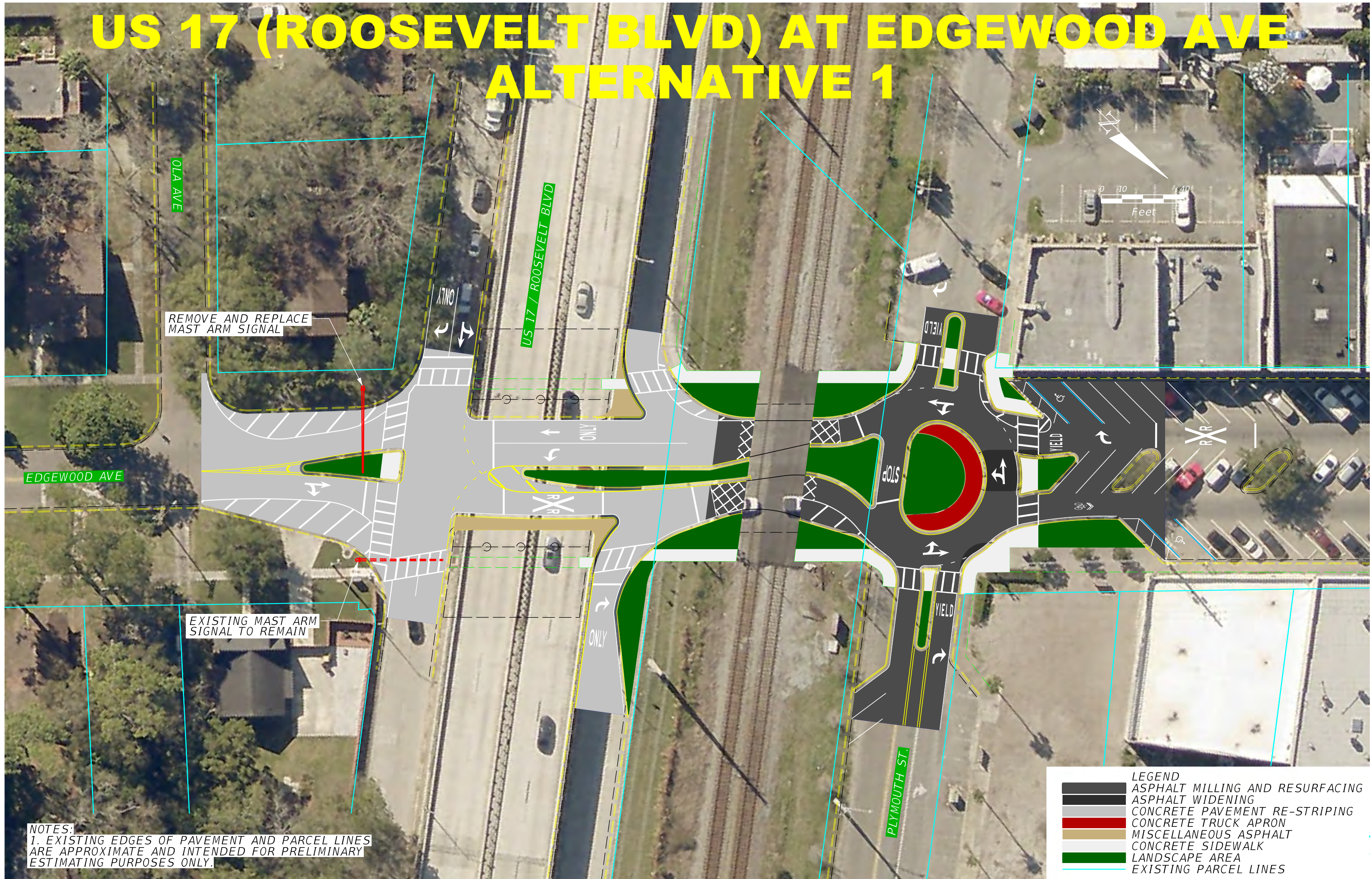


US 17 (ROOSEVELT BLVD) AT EDGEWOOD AVE ALTERNATIVE 1



REMOVE AND REPLACE
MAST ARM SIGNAL

EDGEWOOD AVE

US 17 / ROOSEVELT BLVD

EXISTING MAST ARM
SIGNAL TO REMAIN

PLYMOUTH ST.

- LEGEND**
- ASPHALT MILLING AND RESURFACING
 - ASPHALT WIDENING
 - CONCRETE PAVEMENT RE-STRIPING
 - CONCRETE TRUCK APRON
 - MISCELLANEOUS ASPHALT
 - CONCRETE SIDEWALK
 - LANDSCAPE AREA
 - EXISTING PARCEL LINES

NOTES:
1. EXISTING EDGES OF PAVEMENT AND PARCEL LINES
ARE APPROXIMATE AND INTENDED FOR PRELIMINARY
ESTIMATING PURPOSES ONLY.