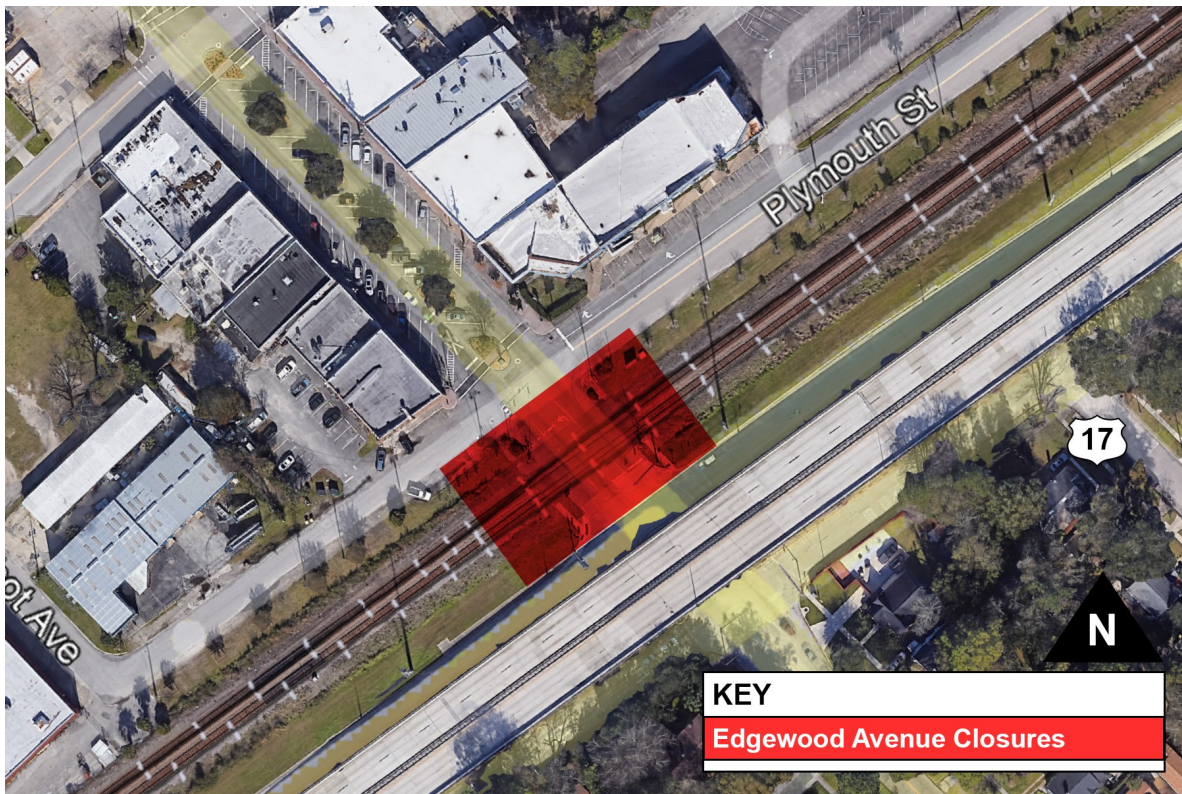


## Upcoming Construction Closures and Detours

As part of FDOT's Edgewood Avenue South from Roosevelt Boulevard to Cassat Avenue Roadway Improvements project and the Edgewood Avenue South Rail Crossing Rehabilitation project, Edgewood Avenue South will experience weekly closures and detours during construction activities. Rehabilitation of the rail crossing (**starting March 18 at 6 a.m.**) and construction of the roundabout traffic configuration at Edgewood Avenue South and Plymouth Street are expected to last a total of approximately 8 weeks, weather and unforeseen circumstances permitting. Traffic should follow marked detour routes.

**Please note: Due to closure for roundabout traffic configuration construction and bridge painting, Edgewood Avenue South between Mayflower Street and the railroad tracks will be closed to truck traffic. Deliveries should seek alternate routes in the area.**

During rail crossing rehabilitation, Edgewood Avenue South at the railroad tracks will remain completely closed for approximately 10 days, weather and unforeseen circumstances permitting (see graphic below).



For more information, visit [NFLRoads.com](http://NFLRoads.com) or call Bert Watson at (904) 360-5436.

**See reverse side for roundabout construction closures.**



# Roundabout Construction and Overpass Painting

Construction of the roundabout traffic configuration at Edgewood Avenue South and Plymouth Street will last an estimated seven weeks, weather and unforeseen circumstances permitting. After reconstruction of the railroad crossing is complete and during construction of the roundabout at Edgewood Avenue South and Plymouth Street, the closure and detour will be in place weekly from 8 p.m. on Sundays to 3 p.m. on Fridays (**top graphic**) for approximately 6 weeks, weather and unforeseen circumstances permitting. In addition to roundabout construction, the overpass will be painted while closures are in place. From 3 p.m. on Fridays to 8 p.m. on Sundays, Edgewood Avenue South and Plymouth Street will be open to traffic (**bottom graphic**). Follow detour signs while the closure is in place.

