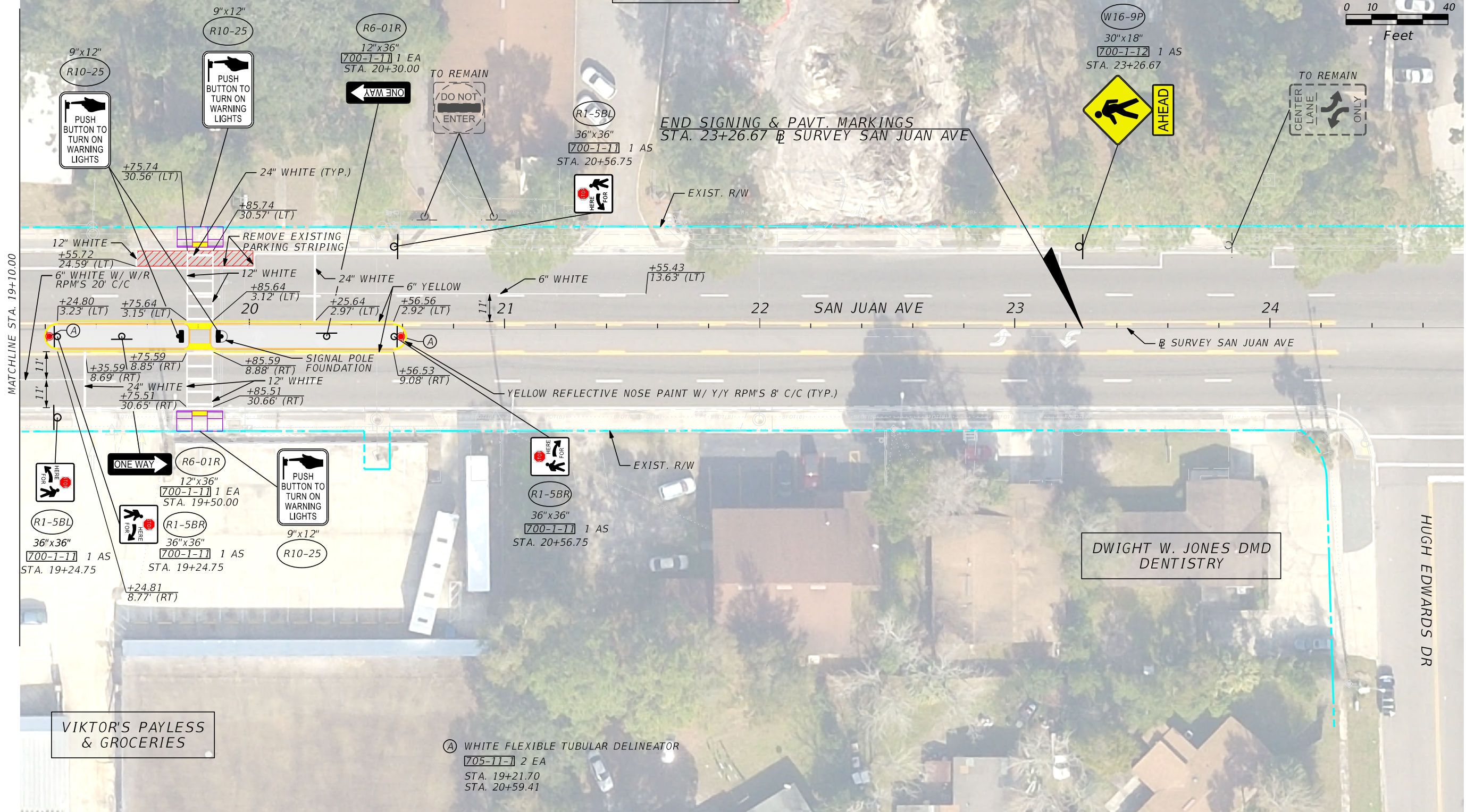
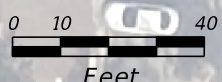


WESTSIDE INDEPENDENT
METHODIST CHURCH

NOBLE HOUSE
RETIREMENT

(W11-2)
36"x36"
(W16-9P)
30"x18"
(700-1-12) 1 AS
STA. 23+26.67



DWIGHT W. JONES DMD
DENTISTRY

HUGH EDWARDS DR

VIKTOR'S PAYLESS
& GROCERIES

(A) WHITE FLEXIBLE TUBULAR DELINEATOR
(705-11-1) 2 EA
STA. 19+21.70
STA. 20+59.41

REVISIONS			
DATE	DESCRIPTION	DATE	DESCRIPTION



STATE OF FLORIDA DEPARTMENT OF TRANSPORTATION		
ROAD NO.	COUNTY	FINANCIAL PROJECT ID
SR 128	DUVAL	444637-1-52-01

SIGNING AND PAVEMENT
MARKING PLAN (2)

SHEET NO.
3