

Parking Space Totals

Street Segment	Proposed Alternative (One Way Pairs)		
	On Street Parking Spaces Removed	On Street Parking Spaces Retained	Off Street Parking Spaces Added
264 th Street to 259 th	10	19	0
259 th St. to 257 th Street	8	11	7
257 th Street to Railroad Crossing	21	30	120
Railroad Crossing to US 41	9	10	0
Total	48	70	127

Estimated Project Costs

	Proposed Alternative (One Way Pairs)	
Construction		\$ 9,077,000
Engineering		\$ 2,723,000
Right of Way		\$ 3,683,000
Relocations		1
Total		\$15,483,000



State Road 26 - W. Newberry Road

Project Development and Environment (PD&E) Study

(From the Gilchrist County Line to County Road 26A)



Newberry, FL

Financial Project ID: 207850-2

PUBLIC INFORMATION MEETING

January 28, 2016
Open House
4:30 - 6:30 p.m.
Comment Period at 6:30 p.m.

City of Newberry
Municipal Building
25440 West Newberry Road
Newberry, FL 32669

Welcome to the Public Information Meeting, where potential solutions to improve traffic flow on State Road (SR) 26 through Newberry are being presented.

The Florida Department of Transportation (FDOT) is performing a Project Development & Environment (PD&E) Study on SR 26 (W. Newberry Road) from the Gilchrist County line to County Road 26A (Newberry Lane). A PD&E Study is a detailed process by which major transportation projects are developed by FDOT. The objective of a PD&E Study is to perform initial engineering analysis to address transportation and safety needs and to evaluate potential social and environmental impacts. This study, along with input received from the public, will serve as the basis for selection of the recommended improvements.



Looking west on SR 26 at railroad crossing



Looking west on SR 26 at City Hall

A Public Kick-Off Meeting for the project was held on June 11, 2015 at the City of Newberry Municipal Building. Three alternatives were presented that addressed capacity improvements through the City of Newberry. The meeting was an "Open House" format for two hours followed by an opportunity for public questions and comments. As a result of comments received at the meeting, one-way pairs are recommended for further study.

The purpose of tonight's meeting is to provide an opportunity for you to review the concept, ask questions and again provide comments regarding the project.

Comments

FDOT remains committed to working with all project stakeholders. No final decision will be made until we hear your comments. You may give us your comments by:

- Completing a comment form and dropping it in the comment box provided tonight.
- Giving an oral statement during tonight's comment period.
- Mailing or emailing your comments to the address provided.

For additional information,
please contact:

Stephen Browning, P.E., Project Manager
Florida Department of Transportation
1109 S. Marion Avenue, MS 2007
Lake City, FL 32025-5874
Call: (386) 961-7455 or
(800) 749-2967 ext. 7455
Email: stephen.browning@dot.state.fl.us

**To view materials presented at the meeting
online, visit our web site at:**
www.nflroads.com/WestNewberryRoad



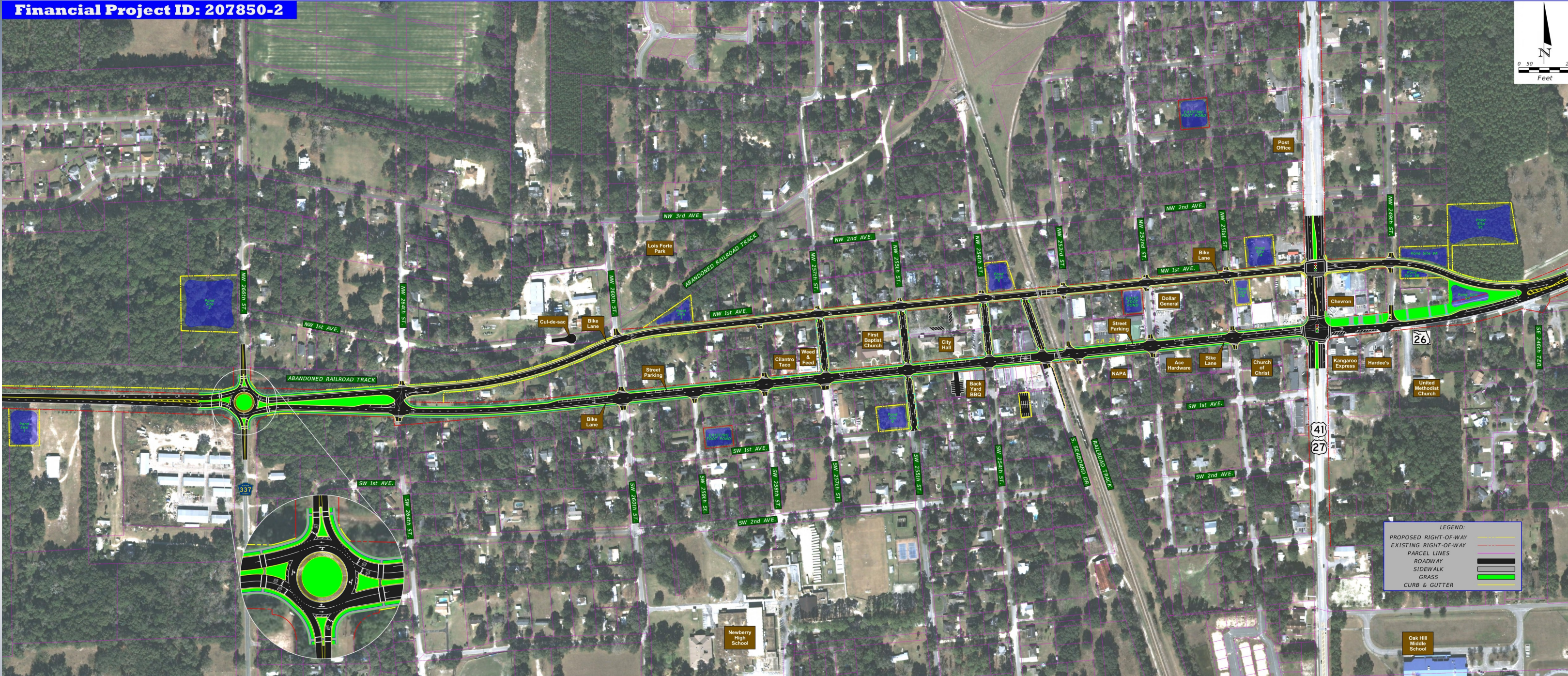
Follow us on Facebook (myfdotnefl) and
Twitter (@myFDOT_NEFL)



The proposed alternative provides four lanes of traffic through Newberry. The four lanes begin west of CR 337. At 264th Street the lanes split creating a one-way pair system. SR 26 would become the east-bound one-way street while NW 1st Avenue would become the wesbound one-way street. The one-way pair system ties into the existing four-lane section at Doc Karelas Drive.

SR 26 would have two 12' travel lanes, a bicycle lane on the south side of the street and on-street parking on the north side of the street. NW 1st Avenue would have two 11' travel lanes and a bicycle lane on the north side along with sidewalks on both sides of the roadway. The proposed improvements also include the consideration of a roundabout at the SR 26 and CR 337 intersection.

Financial Project ID: 207850-2



SR 26 PROJECT DEVELOPMENT AND ENVIRONMENT STUDY - ONE-WAY PAIRS

