



Florida Department of Transportation

RON DESANTIS
GOVERNOR

2198 Edison Avenue
Jacksonville, FL 32204

JARED W. PERDUE, P.E.
SECRETARY

For Immediate Release
May 7, 2024

Contact: Hampton Ray
(904) 476-8330 | Hampton.Ray@dot.state.fl.us

Southbound Full Directional Detour of Emerson Expressway Begins May 10 as Nightly Detours Continue in Both Directions

JACKSONVILLE, Fla. – A full directional detour of southbound Emerson Expressway is set to begin Friday, May 10 at 6:30 p.m. and continue until Monday, May 13, at 6:30 a.m. as the Florida Department of Transportation (FDOT) continues the Emerson Expressway (State Road 228A) resurfacing project.

The northbound lanes of the Emerson Expressway will remain open during daytime hours, although nightly detours on both southbound and northbound Emerson Expressway will remain in place to enhance the safety of motorists, pedestrians and service personnel during construction.

Motorists can expect the following closures as part of construction:

Southbound Full Directional Detour: A continuous detour of southbound Emerson Expressway is scheduled to begin Friday, May 10 at 6:30 p.m. Crews expect this work to be complete by Monday, May 13, at 6:30 a.m.; however, the roadway will reopen once the concrete reaches the required strength, and all safety inspections are performed.

Nightly Southbound and Northbound Detours: Nightly detours from 6:30 p.m. to 6:30 a.m. the following morning will occur on Emerson Expressway between Emerson Street and Atlantic Boulevard until May 10.

Northbound Detour Routes:

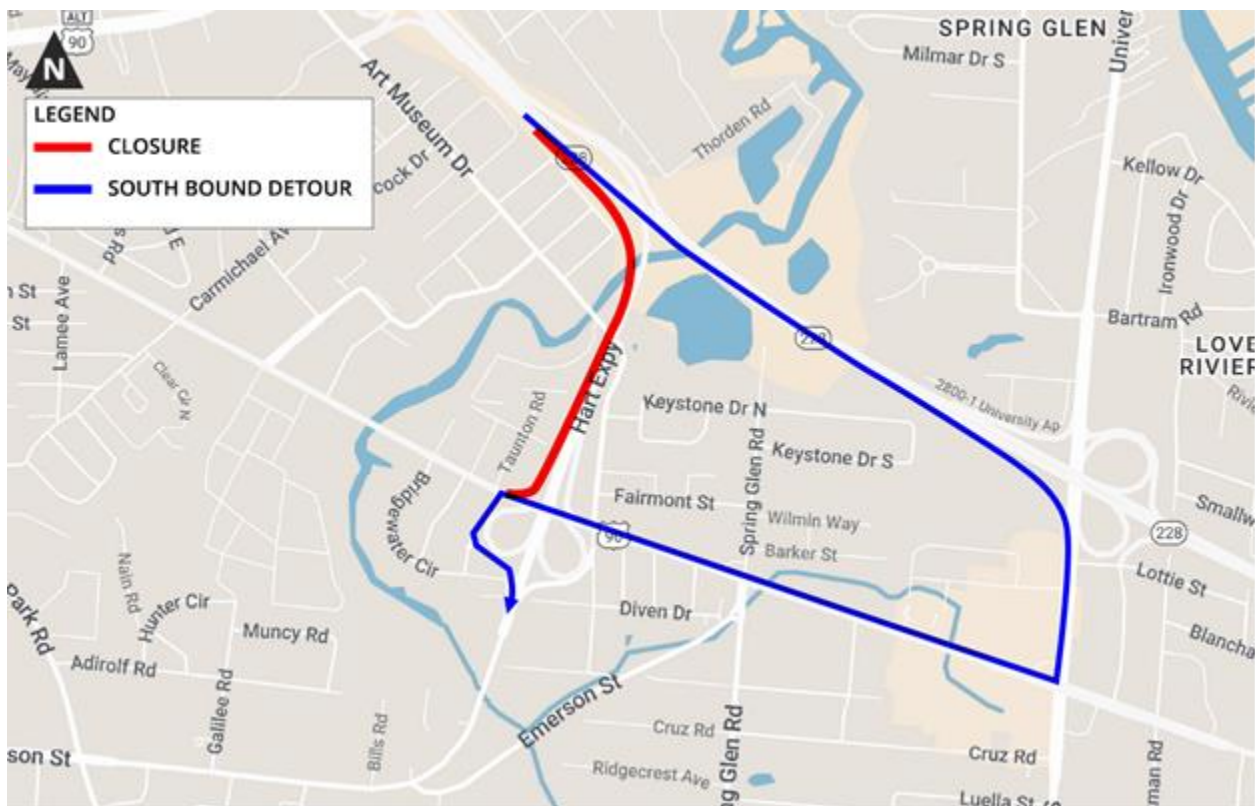
- Northbound traffic on Emerson Expressway will detour east onto Beach Boulevard, north onto University Boulevard, then onto the Hart Bridge Expressway towards Atlantic Boulevard and Downtown.
- Northbound traffic on Art Museum Drive attempting to access Emerson Expressway will detour west on Atlantic Boulevard, south on Linden Avenue,

east on Beach Boulevard and south on Taunton Road to access southbound Emerson Expressway.

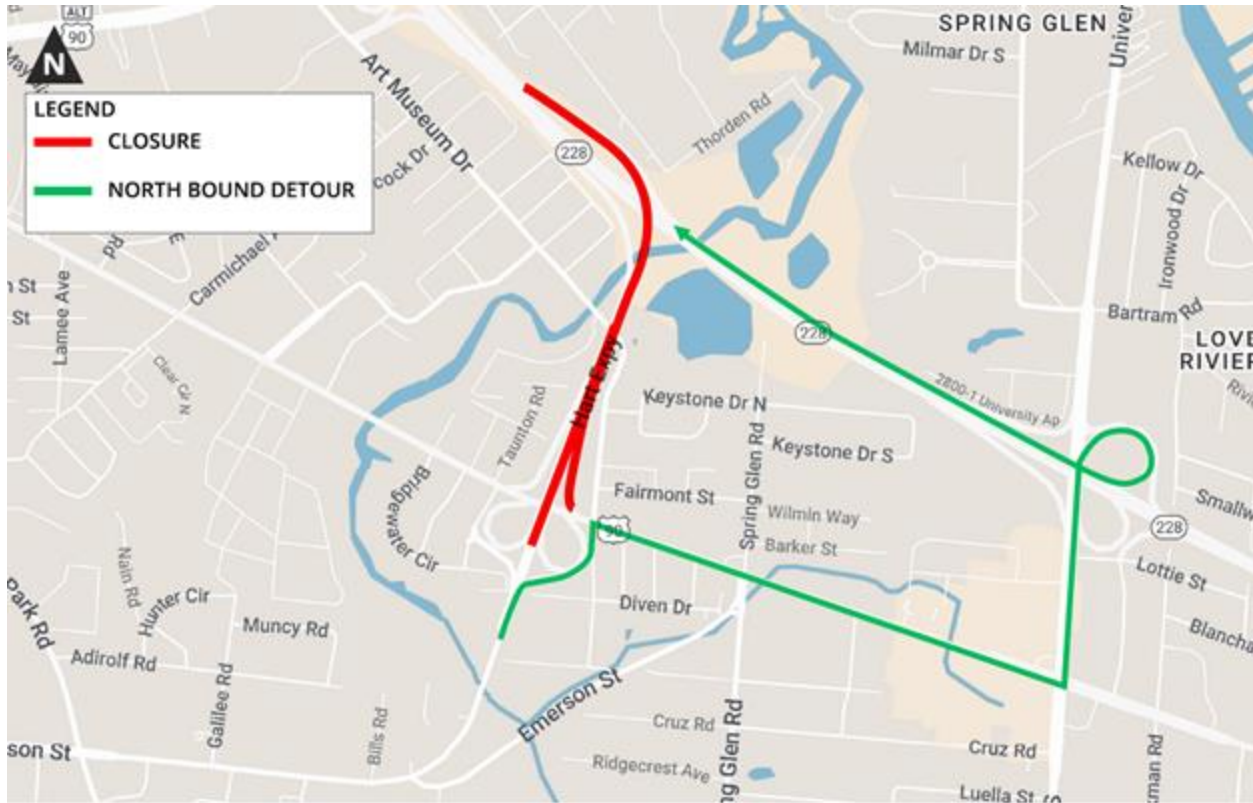
Southbound Detour Routes:

- Southbound traffic on Emerson Expressway will remain on the Hart Bridge Expressway, exit south onto University Boulevard, west onto Beach Boulevard and then south on Taunton Road to the Emerson Expressway south on-ramp.
- Southbound traffic on Art Museum Drive attempting to access Emerson Expressway will continue south on Art Museum Drive, west on Beach Boulevard and south on Taunton Road to access southbound Emerson Expressway.

Southbound Detour Map:



Northbound Detour Map:



During construction, motorists are encouraged to seek alternate routes and allow extra time to reach their destinations.

De Moya Highway Infrastructure was awarded the \$10.3 million project. Roadway improvements as part of this project include milling and resurfacing, shoulder treatments, drainage improvements, curb and gutter treatment, guardrail work and the rehabilitation of concrete along portions of the roadway. Work is expected to be completed in fall 2024, weather and unforeseen circumstances permitting.

Stay informed about lane closures and roadwork in your area by following FDOT District 2 at [@MyFDOT_NEFL](#) on X (formerly Twitter), at [MyFDOTNEFL](#) on Facebook or by visiting [nflroads.com](#). Drivers seeking real-time traffic alerts may visit [www.FL511.com](#) or download the FL511 app.

###

Improve Safety, Enhance Mobility, Inspire Innovation
 NFLRoads.com | [@MyFDOT_NEFL](#) | [Facebook.com/MyFDOTNEFL](#)

The Florida Department of Transportation's mission is to provide a safe transportation system that ensures the mobility of people and goods, enhances economic prosperity, and preserves the quality of the state's environment and communities. The department is committed to building a transportation system that not only fits the current needs of Florida's residents and visitors, but also enhances mobility throughout the state to accommodate its consistent and rapid growth. The unique nature of the Sunshine State and its year-round warm climate provides numerous opportunities to achieve the department's mission through multiple transportation modes including highways/streets, air, rail, sea, spaceports, transit, and the ever-expanding deployment of bicycle & pedestrian facilities.