



Florida Department of Transportation

RON DESANTIS
GOVERNOR

2198 Edison Avenue
Jacksonville, Florida 32204-2730

KEVIN J. THIBAUT, P.E.
SECRETARY

For Immediate Release

April 21, 2021

Contact: Bianca Speights

(904) 360-5471 | Bianca.Speights@dot.state.fl.us

Lakeview Trail to Close Temporarily for State Road 20 Widening Work

INTERLACHEN, Fla.- As part of the State Road 20 widening project, Lakeview Trail at State Road 20 will be closed Monday, April 26 through late June, weather and unforeseen circumstances permitting. The closure is necessary to complete roadway reconstruction work.

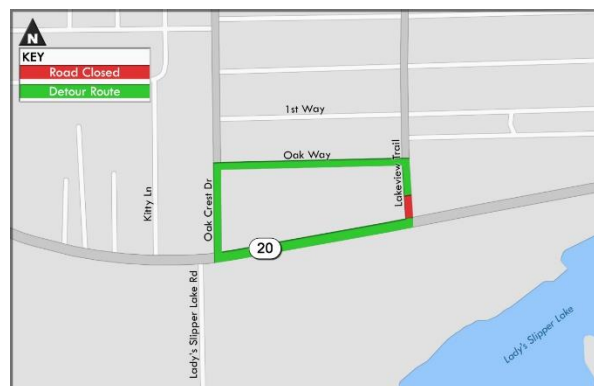
Drivers will detour via Oakcrest Drive to access State Road 20.

Periodic traffic/lane shifts will be necessary on State Road 20 to allow the contractor to safely complete work. Lane closures are allowed Monday through Friday after 8:30 a.m.

This segment includes widening State Road 20 from SW 56th Avenue to County Road 315 from a two-lane roadway to a four-lane urban roadway with curbs, gutters, medians, bike lanes, 5-foot sidewalk on the north side and a 10-foot multi-use path on the south side of the roadway.

P & S Paving, Inc. was selected to complete the \$23 million roadway construction by summer 2021, weather and unforeseen circumstances permitting.

Stay informed about lane closures and roadwork in your area by following FDOT District 2 at [@MyFDOT_NEFL](https://twitter.com/MyFDOT_NEFL) on Twitter or at [MyFDOTNEFL](https://www.facebook.com/MyFDOTNEFL) on Facebook.



###

Improve Safety, Enhance Mobility, Inspire Innovation
NFLRoads.com | [@MyFDOT_NEFL](https://twitter.com/MyFDOT_NEFL) | [Facebook.com/MyFDOTNEFL](https://www.facebook.com/MyFDOTNEFL)

The Florida Department of Transportation's mission is to provide a safe transportation system that ensures the mobility of people and goods, enhances economic prosperity, and preserves the quality of the state's environment and communities. The department is committed to building a transportation system that not only fits the current needs of Florida's residents and visitors, but also enhances mobility throughout the state to accommodate its consistent and rapid growth. The unique nature of the Sunshine State and its year-round warm climate provides numerous opportunities to achieve the department's mission through multiple transportation modes including highways/streets, air, rail, sea, spaceports, transit, and the ever-expanding deployment of bicycle & pedestrian facilities.