



Florida Department of Transportation

RON DESANTIS
GOVERNOR

1109 South Marion Avenue
Lake City, Florida 32025-5874

KEVIN J. THIBAUT, P.E.
SECRETARY

For Immediate Release

July 10, 2020

Contact: Sara Pleasants

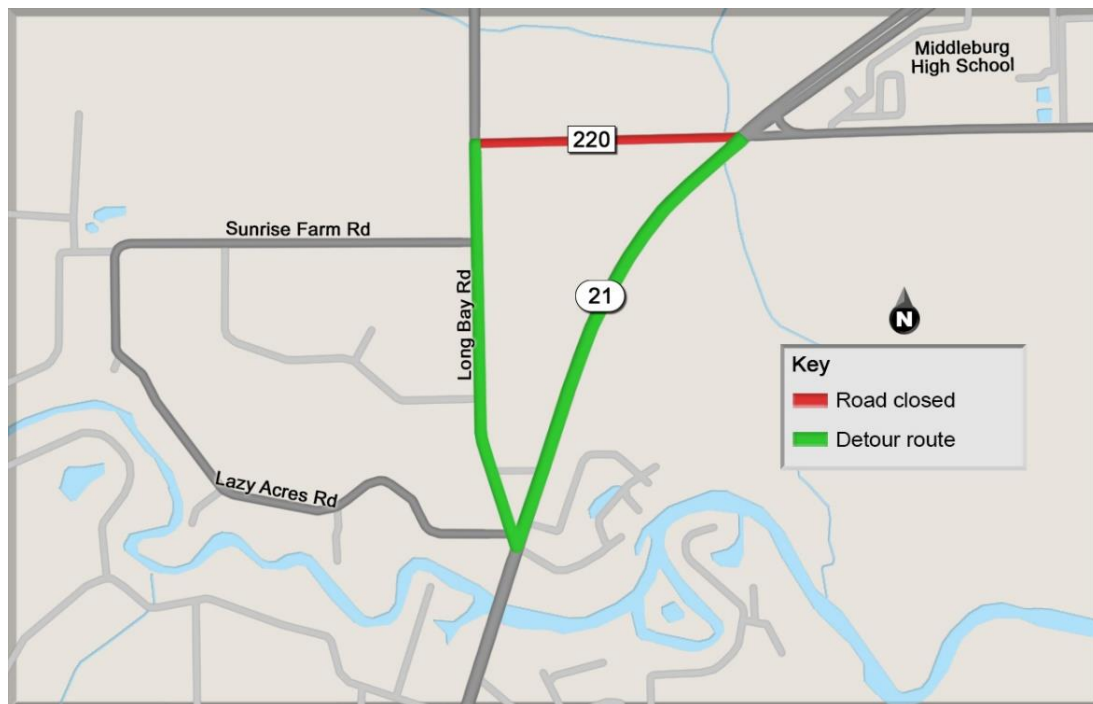
(386) 269-3490

Sara.Pleasants@dot.state.fl.us

ICYMI: Long Bay Road to Reopen, Segment of County Road 220 West to Close as Part of Blanding Boulevard Widening Project

Middleburg, Fla. – As part of the Blanding Boulevard (State Road 21) widening project between Allie Murray Road and Long Bay Road, the new alignment of Long Bay Road and Blanding Boulevard is expected to open to traffic Monday, July 13, weather and schedule permitting.

On Tuesday, July 14, a segment of County Road 220 West at Blanding Boulevard will close to traffic for several months as the contractor constructs a new alignment at this intersection. Motorists will be detoured via Long Bay Road and Blanding Boulevard as shown in the map below.



Construction on the project began in January 2019. Project improvements include widening the road from four lanes to six lanes; full reconstruction of the roadway; adding 4-foot wide bike lanes in both directions; adding 6-foot wide sidewalks in both directions; replacement of traffic signals and street lights; construction of a new drainage system; and realignment of the intersections at Long Bay Road and County Road 220 Access Road.



Florida Department of Transportation

RON DESANTIS
GOVERNOR

1109 South Marion Avenue
Lake City, Florida 32025-5874

KEVIN J. THIBAUT, P.E.
SECRETARY

Contractor R.B. Baker Construction Company is expected to complete the \$19.1 million project in fall 2021, weather and schedule permitting.

The Florida Department of Transportation urges motorists to always follow the speed limit and stay within the limits of orange cones and barrels while traveling through construction zones. For up-to-date information regarding construction projects and lane closures, please visit www.nflroads.com or contact FDOT personnel at (904) 831-FDOT.

###